

**ALUCA®**

Lightweight mobile storage systems



***ALUCA accessories for your  
van racking systems***

[www.aluca.de](http://www.aluca.de)







## ***Welcome to ALUCA***

ALUCA manufactures light-weight, strong and safe systems for those who are on the road each day. We offer the right solution for any requirement.

We use our considerable creativity and skill to develop individual products for our customers using 100% aluminium.

We want you to be convinced of the quality and individuality of our top-quality in-vehicle racking systems.

Our employees live the ALUCA philosophy and will amaze you as well.

“Lightweight mobile storage systems”.





	<b>Page</b>
<b>ALUCA dimension2</b>	<b>7</b>
Your benefits	8
Divider and compartment sets	10
Inset box sets	14

<b>System ALUCA</b>	<b>17</b>
Your benefits	18
Divider and compartment sets	20
Inset boxes for drawers	22
Trays	25
Aluminium box	28
Workbenches	30
System ALUCA accessories	34

<b>Modules</b>	<b>37</b>
Your benefits	37
S modules	38
M modules	40
L modules	48

<b>Cargo area equipment</b>	<b>55</b>
Lashing rails	56
Lashing straps and tension belts	58
Gas cylinder transport kit	60
Locking ratchets	61
Ladder holder	63
Anti-slip mats	64

	<b>Page</b>
<b>ALUCA box system</b>	<b>67</b>
Your benefits	67
S-BOXXes	68
Shelf bins	70
Euro boxes	71
T-BOXXes	72
L-BOXXes	74
Equipment holder	79

<b>Further accessories</b>	<b>81</b>
Your benefits	81
Cargo secured on the vehicle	82
Tailgate ladder	85
Step	85
Cargo secured in the vehicle	86
Hygiene	92
Ventilation	94
Electronic installations	96
Warning and emergency accessories	104





www.awca.de

**AWCA**  
Dimension 2

**AWCA**  
Dimension 2





## ***ALUCA dimension2***

With its roomy drawers, ALUCA dimension2 is perfect for organisation and allows access to the in-vehicle racking system at all times even though

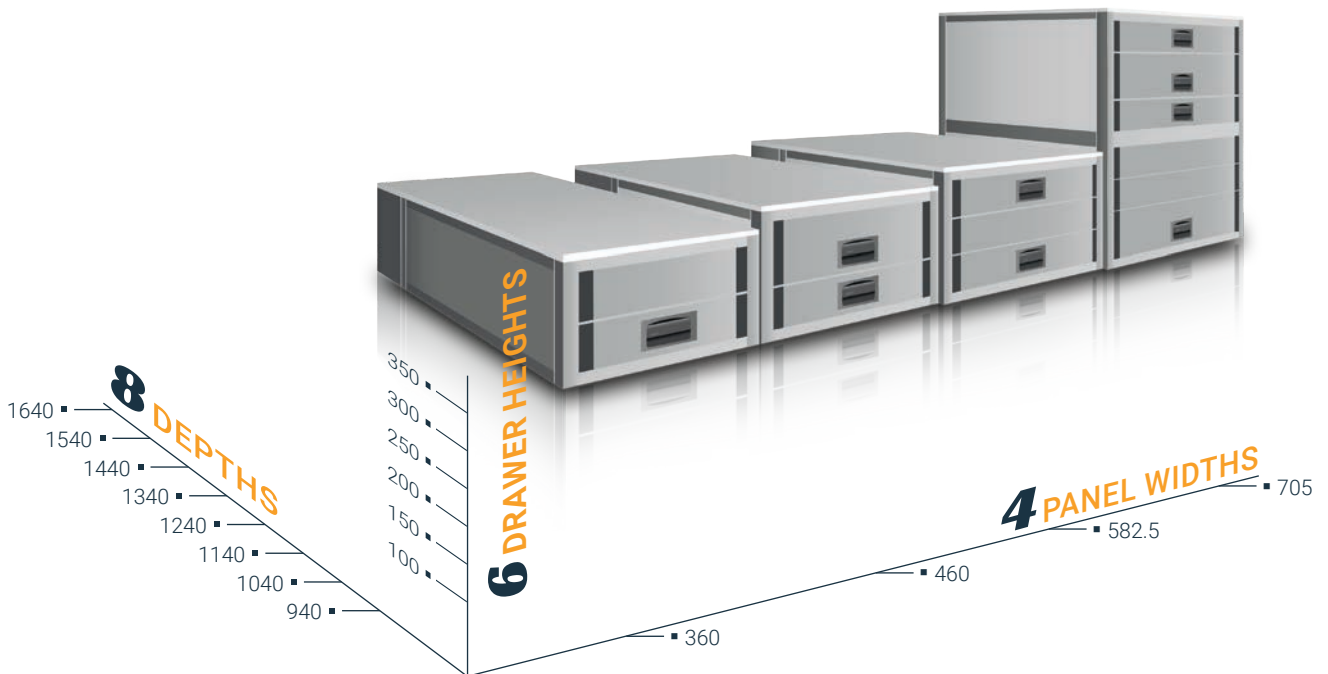
the cargo space is fully loaded. This solution allows all equipment, materials and accessories to be stored ergonomically.



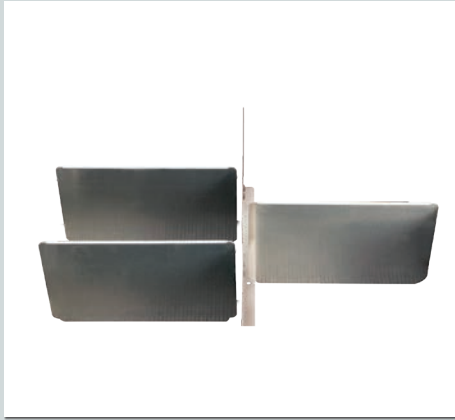
## YOUR BENEFITS

- ✓ Fill your cargo space completely
- ✓ Ergonomic loading and unloading of drawers outside the vehicle
- ✓ Materials easy to remove thanks to full-length drawer rails
- ✓ Cargo secured in seconds
- ✓ Fully usable cargo floor: top panel can carry loads of up to 700 kg
- ✓ Efficient use of space thanks to high distributed loads of up to 80 kg per drawer

ALUCA dimension2 offers you innumerable combination options.

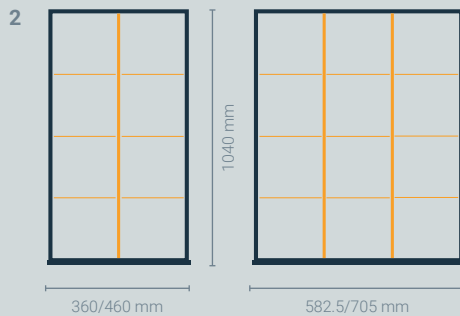
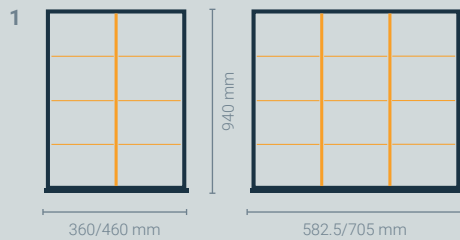






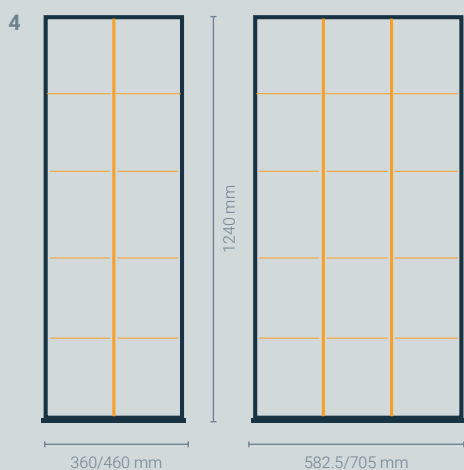
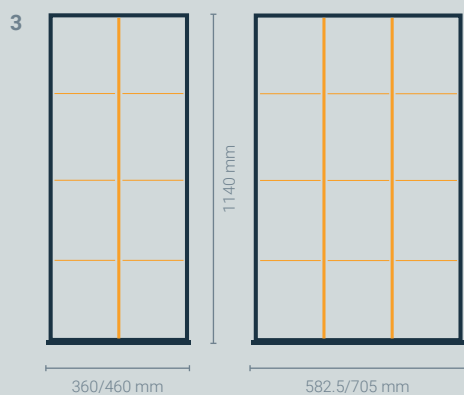
## DIVIDER AND COMPARTMENT SETS

- Each set divides one drawer
- Divider dimensions can be changed and increased

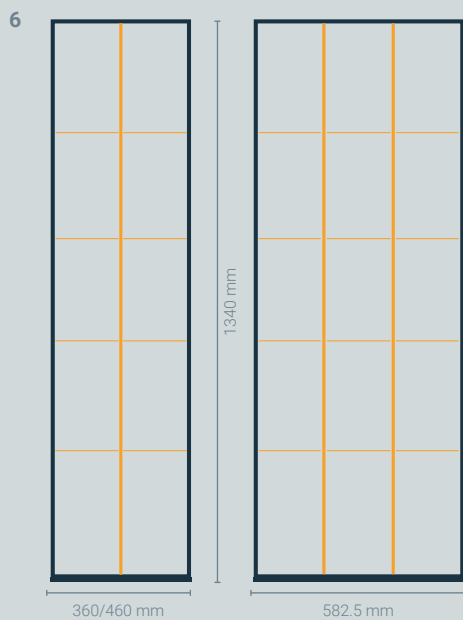
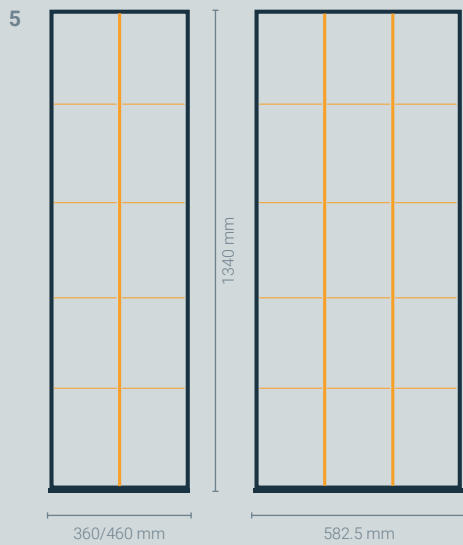


Item no.	Fig.	Possible drawer dimensions H x W x D (mm)	Weight (kg)
107548	1	100 x 360 x 940	0.69
107371	1	100 x 460 x 940	0.76
107549	1	100 x 582.5 x 940	1.21
107550	1	100 x 705 x 940	1.34
103575	1	150 x 360 x 940	0.95
103578	1	150 x 460 x 940	1.10
105306	1	150 x 582.5 x 940	1.75
103581	1	150 x 705 x 940	1.94
106653	1	200 x 460 x 940	1.67
106654	1	200 x 582.5 x 940	2.65
107579	1	250 x 460 x 940	2.06
107580	1	250 x 582.5 x 940	3.28
106655	1	300 x 460 x 940	2.47
106656	1	300 x 582.5 x 940	4.03
107595	1	350 x 460 x 940	2.89
107596	1	350 x 582.5 x 940	4.60
107551	2	100 x 360 x 1040	0.69
107552	2	100 x 460 x 1040	0.79
107553	2	100 x 582.5 x 1040	1.39
107554	2	100 x 705 x 1040	1.51
103576	2	150 x 360 x 1040	1.00
103579	2	150 x 460 x 1040	1.15
105307	2	150 x 582.5 x 1040	1.85
103582	2	150 x 705 x 1040	2.04
106657	2	200 x 460 x 1040	1.74
106658	2	200 x 582.5 x 1040	2.79
107581	2	250 x 460 x 1040	2.15
107582	2	250 x 582.5 x 1040	3.47
106659	2	300 x 460 x 1040	2.65
106660	2	300 x 582.5 x 1040	4.25
107597	2	350 x 460 x 1040	3.03
107598	2	350 x 582.5 x 1040	4.84

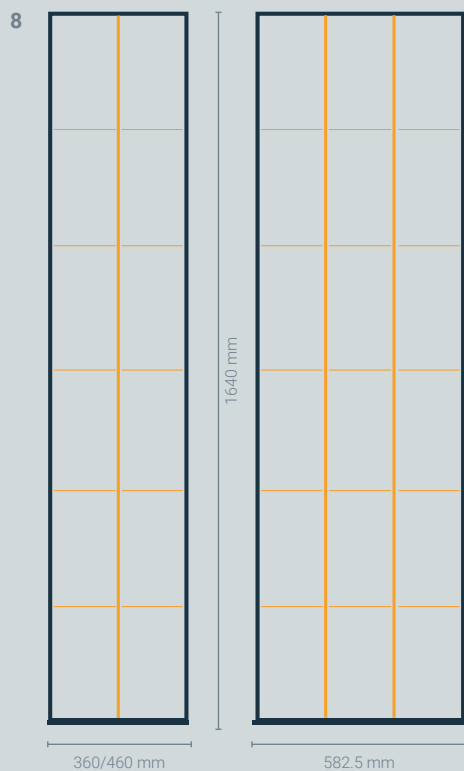
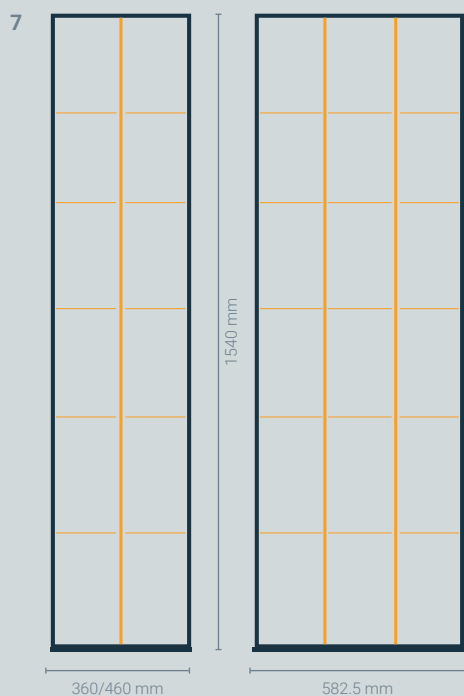




Item no.	Fig.	Possible drawer dimensions H x W x D (mm)	Weight (kg)
107555	3	100 x 360 x 1140	0.70
107556	3	100 x 460 x 1140	0.80
107557	3	100 x 582.5 x 1140	1.29
107558	3	100 x 705 x 1140	1.41
103577	3	150 x 360 x 1140	1.06
103580	3	150 x 460 x 1140	1.21
105308	3	150 x 582.5 x 1140	1.95
103583	3	150 x 705 x 1140	2.14
106661	3	200 x 460 x 1140	1.82
106662	3	200 x 582.5 x 1140	2.94
107583	3	250 x 460 x 1140	2.26
107584	3	250 x 582.5 x 1140	3.68
106663	3	300 x 460 x 1140	2.76
106664	3	300 x 582.5 x 1140	4.48
107600	3	350 x 582.5 x 1140	5.11
107559	4	100 x 360 x 1240	0.82
107560	4	100 x 460 x 1240	0.94
107561	4	100 x 582.5 x 1240	1.63
107574	4	150 x 360 x 1240	1.30
106665	4	150 x 460 x 1240	1.51
106666	4	150 x 582.5 x 1240	2.39
106667	4	200 x 460 x 1240	2.22
106668	4	200 x 582.5 x 1240	3.52
107585	4	250 x 460 x 1240	2.75
107586	4	250 x 582.5 x 1240	4.40
106669	4	300 x 460 x 1240	3.38
106670	4	300 x 582.5 x 1240	5.37
107601	4	350 x 460 x 1240	3.86
107602	4	350 x 582.5 x 1240	5.85



Item no.	Fig.	Possible drawer dimensions H x W x D (mm)	Weight (kg)
107562	5	100 x 360 x 1340	0.86
107563	5	100 x 460 x 1340	0.99
107564	5	100 x 582.5 x 1340	1.57
107575	5	150 x 360 x 1340	1.29
106671	5	150 x 460 x 1340	1.56
106672	5	150 x 582.5 x 1340	2.50
106673	5	200 x 460 x 1340	2.31
106674	5	200 x 582.5 x 1340	3.68
107587	5	250 x 460 x 1340	2.79
107588	5	250 x 582.5 x 1340	4.51
106675	5	300 x 460 x 1340	3.50
106676	5	300 x 582.5 x 1340	5.61
107603	5	350 x 460 x 1340	4.00
107604	5	350 x 582.5 x 1340	6.38
107565	6	100 x 360 x 1440	0.92
107566	6	100 x 460 x 1440	1.05
107567	6	100 x 582.5 x 1440	1.85
107576	6	150 x 360 x 1440	1.41
106677	6	150 x 460 x 1440	1.61
106678	6	150 x 582.5 x 1440	2.62
106679	6	200 x 460 x 1440	2.38
106680	6	200 x 582.5 x 1440	3.84
107589	6	250 x 460 x 1440	2.90
107590	6	250 x 582.5 x 1440	4.70
106681	6	300 x 460 x 1440	3.62
106682	6	300 x 582.5 x 1440	5.84
107605	6	350 x 460 x 1440	4.12
107606	6	350 x 582.5 x 1440	6.49



Item no.	Fig.	Possible drawer dimensions H x W x D (mm)	Weight (kg)
107568	7	100 x 360 x 1540	1.07
107569	7	100 x 460 x 1540	1.23
107570	7	100 x 582.5 x 1540	1.95
107577	7	150 x 360 x 1540	1.74
106683	7	150 x 460 x 1540	1.88
106684	7	150 x 582.5 x 1540	2.99
106685	7	200 x 460 x 1540	2.78
106686	7	200 x 582.5 x 1540	4.42
107591	7	250 x 460 x 1540	3.38
107592	7	250 x 582.5 x 1540	5.40
106687	7	300 x 460 x 1540	4.23
106688	7	300 x 582.5 x 1540	6.72
107607	7	350 x 460 x 1540	4.83
107608	7	350 x 582.5 x 1540	7.64
107571	8	100 x 360 x 1640	1.10
107572	8	100 x 460 x 1640	1.26
107573	8	100 x 582.5 x 1640	2.02
107578	8	150 x 360 x 1640	1.80
106689	8	150 x 460 x 1640	1.93
106690	8	150 x 582.5 x 1640	3.10
106691	8	200 x 460 x 1640	2.86
106692	8	200 x 582.5 x 1640	4.56
107593	8	250 x 460 x 1640	3.47
107594	8	250 x 582.5 x 1640	5.57
106693	8	300 x 460 x 1640	4.34
106694	8	300 x 582.5 x 1640	6.95
107609	8	350 x 460 x 1640	4.95
107610	8	350 x 582.5 x 1640	7.88

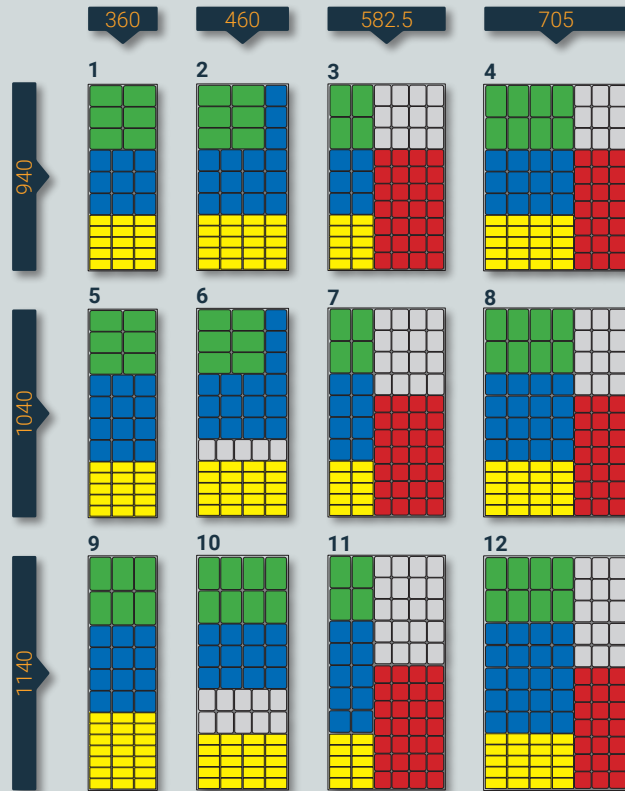


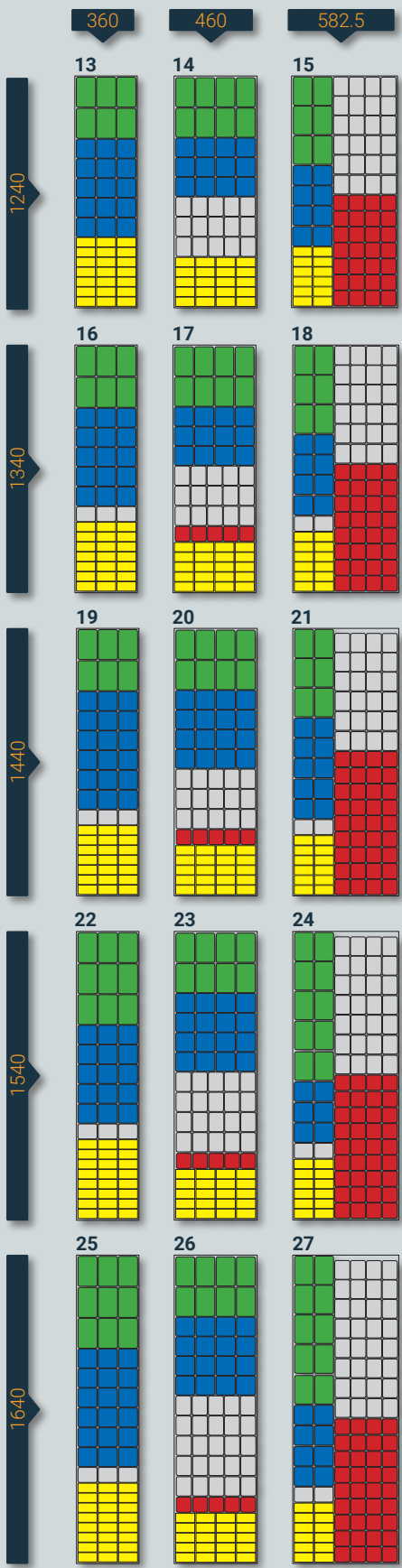


## INSET BOX SETS

- Each set divides one drawer
- Made of impact-resistant plastic
- Ideal for drawers with 100 mm high fronts

Item no.	Fig.	W x D (mm)	Weight (kg)
108419	1	360 x 940	1.82
108427	2	460 x 940	2.37
108435	3	582.5 x 940	3.86
108443	4	705 x 940	4.41
108420	5	360 x 1040	2.02
108428	6	460 x 1040	2.77
108436	7	582.5 x 1040	4.30
108444	8	705 x 1040	4.91
108421	9	360 x 1140	2.21
108429	10	460 x 1140	3.23
108437	11	582.5 x 1140	4.75
108445	12	705 x 1140	5.40





Item no.	Fig.	W x D (mm)	Weight (kg)
108422	13	360 x 1240	2.40
108430	14	460 x 1240	3.63
108438	15	582.5 x 1240	5.26
108423	16	360 x 1340	2.64
108431	17	460 x 1340	3.93
108439	18	582.5 x 1340	5.66
108424	19	360 x 1440	2.83
108432	20	460 x 1440	4.19
108440	21	582.5 x 1440	6.03
108425	22	360 x 1540	3.12
108433	23	460 x 1540	4.59
108441	24	582.5 x 1540	6.61
108426	25	360 x 1640	3.31
108434	26	460 x 1640	4.99
108442	27	582.5 x 1640	7.06







## ***System ALUCA***

ALUCA's modular system is impressive. The optimal combination of components means you get a system that meets all your requirements.

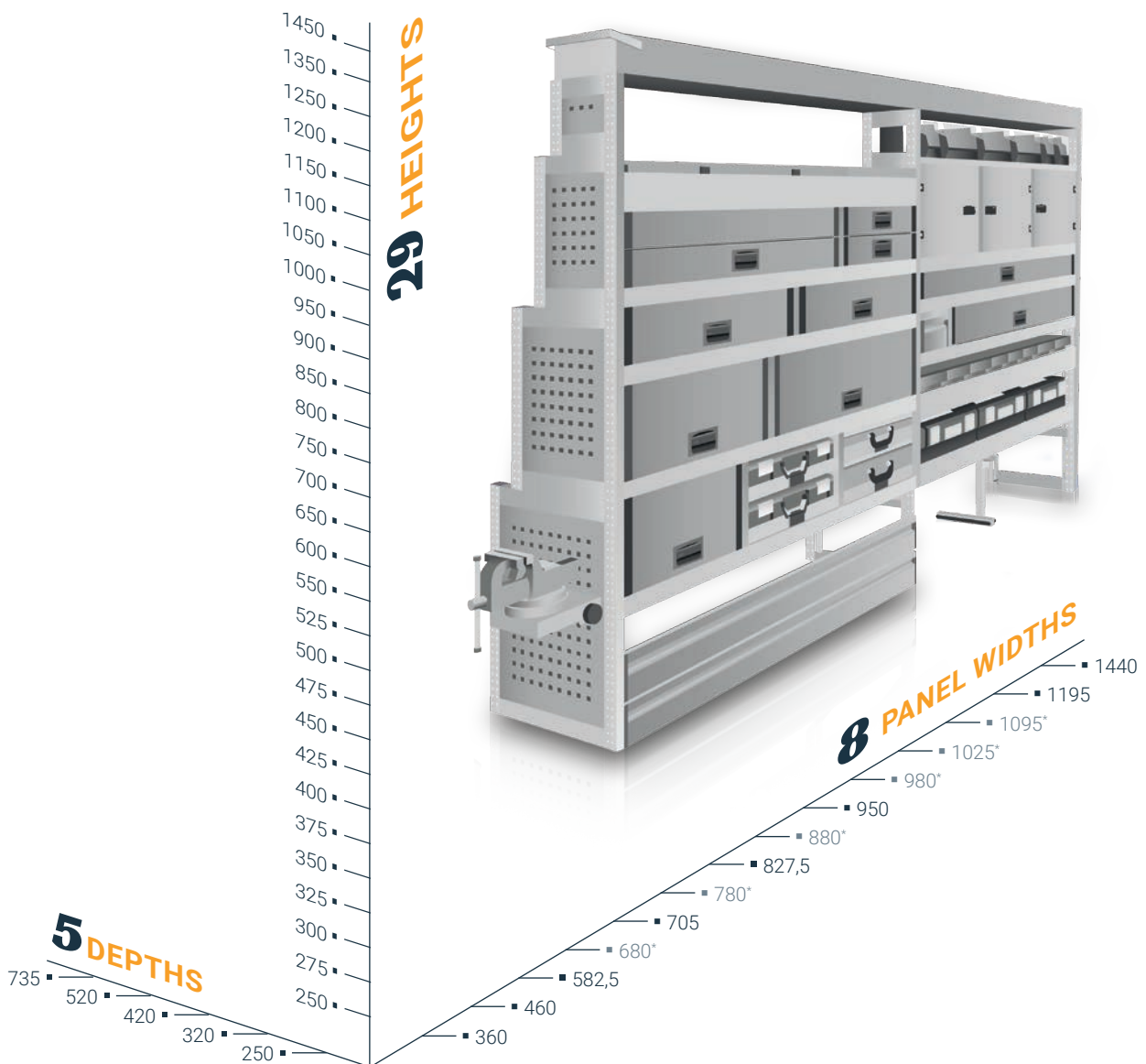
This will turn your vehicle not only into a mobile workshop or mobile warehouse but at the same time will ensure your load is safe.



## YOUR BENEFITS

- ✓ Order and functionality in the vehicle
- ✓ Maximum customization of vehicle racking systems
- ✓ Flexible working in and on the vehicle
- ✓ The ideal system solution for any industry
- ✓ Crash-tested system for passenger safety and protection
- ✓ Comprehensive range of accessories

ALUCA-components are available in numerous dimensions and almost can be combined as desired. This means that every commercial vehicle can be optimally expanded.



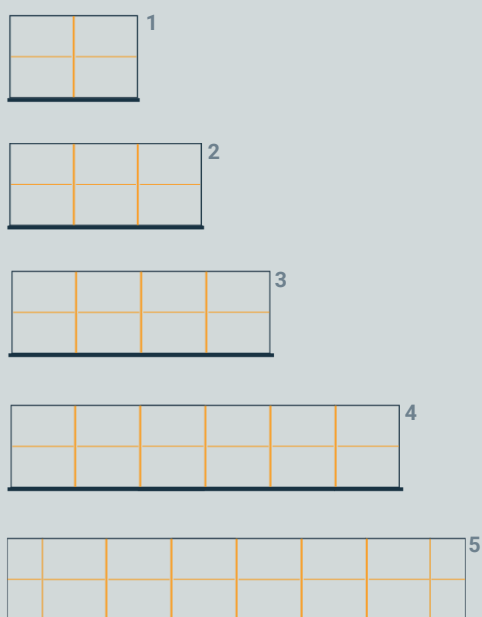






## DIVIDER AND COMPARTMENT SETS

- Each set divides one drawer
- Divider dimensions can be changed and increased

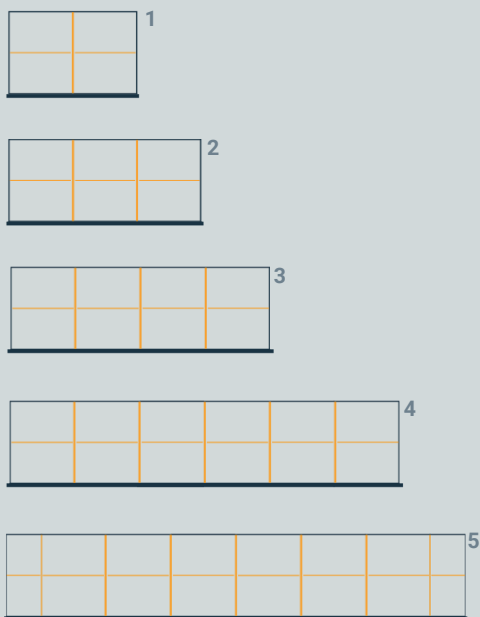


Item no.	Fig.	Possible drawer dimensions H x W x D (mm)	Weight (kg)
102621	1	100 x 360 x 320	0,24
102629	1	100 x 360 x 420	0,26
102637	1	100 x 360 x 520	0,31
102748	1	100 x 360 x 735	0,38
102622	1	100 x 460 x 320	0,27
102630	1	100 x 460 x 420	0,28
102638	1	100 x 460 x 520	0,31
102749	1	100 x 460 x 735	0,42
104779	2	100 x 582,5 x 320	0,44
104780	2	100 x 582,5 x 420	0,45
104781	2	100 x 582,5 x 520	0,52
104782	2	100 x 582,5 x 735	0,72
102623	2	100 x 705 x 320	0,48
102631	2	100 x 705 x 420	0,55
102639	2	100 x 705 x 520	0,61
102750	2	100 x 705 x 735	0,76
109872	2	100 x 827,5 x 320	0,475
109873	2	100 x 827,5 x 420	0,543
109874	2	100 x 827,5 x 520	0,607
102624	3	100 x 950 x 320	0,68
102632	3	100 x 950 x 420	0,72
102640	3	100 x 950 x 520	0,88
108920	4	100 x 1195 x 320	1,16
108922	4	100 x 1195 x 420	1,36
108924	4	100 x 1195x 520	1,56
108926	5	100 x 1440x 320	1,74
108928	5	100 x 1440 x 420	2,05
108930	5	100 x 1440x 520	2,36



## DIVIDER AND COMPARTMENT SETS

- Each set divides one drawer
- Divider dimensions can be changed and increased



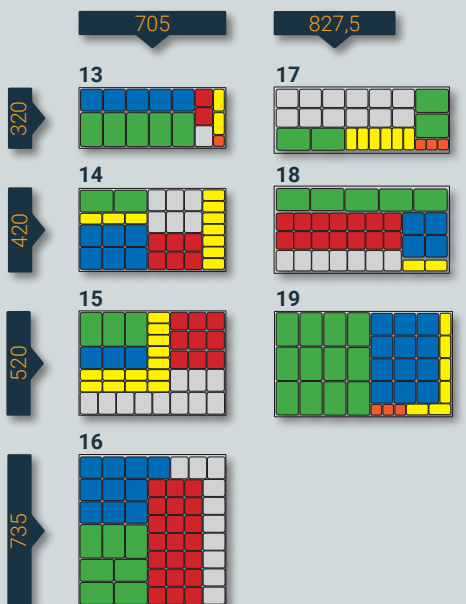
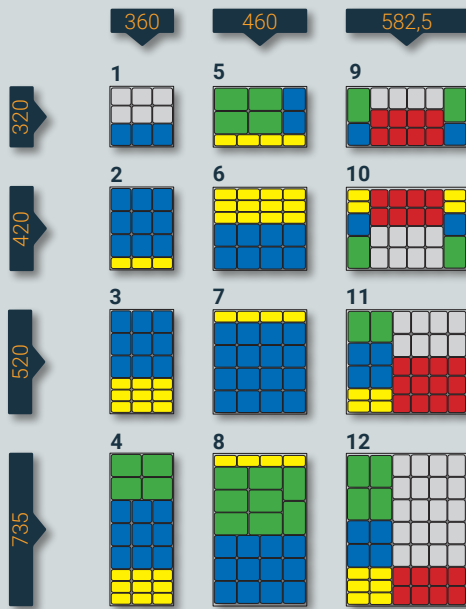
Art.-Nr.	Abb.	Passend für Schublade H x B x T (mm)	Gewicht (kg)
102625	1	150 x 360 x 320	0,34
102633	1	150 x 360 x 420	0,37
102641	1	150 x 360 x 520	0,42
102751	1	150 x 360 x 735	0,54
102626	1	150 x 460 x 320	0,39
102634	1	150 x 460 x 420	0,44
102642	1	150 x 460 x 520	0,49
102752	1	150 x 460 x 735	0,56
104783	2	150 x 582,5 x 320	0,61
104784	2	150 x 582,5 x 420	0,66
104785	2	150 x 582,5 x 520	0,81
104786	2	150 x 582,5 x 735	1,03
102627	2	150 x 705 x 320	0,67
102635	2	150 x 705 x 420	0,73
102643	2	150 x 705 x 520	0,87
102753	2	150 x 705 x 735	1,05
109875	2	150 x 827,5 x 320	0,702
109876	2	150 x 827,5 x 420	0,796
109877	2	150 x 827,5 x 520	0,89
102628	3	150 x 950 x 320	0,89
102636	3	150 x 950 x 420	1,04
102644	3	150 x 950 x 520	1,19
108921	4	150 x 1195 x 320	1,80
108923	4	150 x 1195 x 420	2,14
108925	4	150 x 1195 x 520	2,47
108927	5	150 x 1440 x 320	2,70
108929	5	150 x 1440 x 420	3,22
108931	5	150 x 1440 x 520	3,75





## INSET BOXES FOR DRAWERS

- Made of impact-resistant plastic
- In 6 different sizes
- Ideal for drawers of height 100 mm
- Available in sets that divide one drawer
- Divider dimensions can be changed and increased

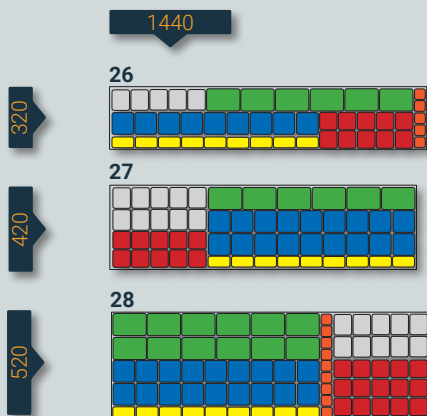
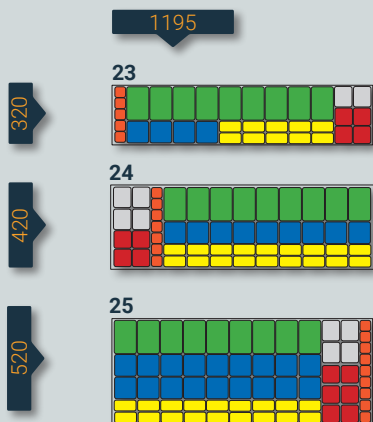
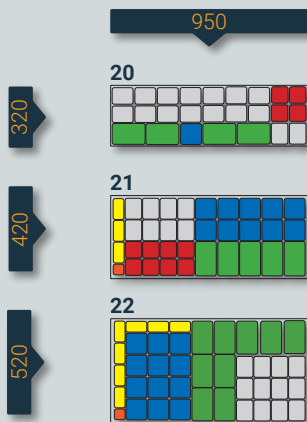


Art.-Nr.	Abb.	B x T (mm)	Gewicht (kg)
102572	1	360 x 320	0,59
102573	2	360 x 420	0,67
102574	3	360 x 520	0,78
102575	4	360 x 735	1,11
102576	5	460 x 320	0,56
102577	6	460 x 420	0,82
102578	7	460 x 520	1,00
102579	8	460 x 735	1,44
104793	9	582,5 x 320	0,71
104794	10	582,5 x 420	1,04
104795	11	582,5 x 520	1,29
104796	12	582,5 x 735	1,85
102580	13	705 x 320	0,87
102581	14	705 x 420	1,27
102582	15	705 x 520	1,59
102583	16	705 x 735	2,26
109878	17	827,5 x 320	1,62
109879	18	827,5 x 420	2,36
109880	19	827,5 x 520	2,54



## INSET BOXES FOR DRAWERS

- Made of impact-resistant plastic
- In 6 different sizes
- Ideal for drawers of height 100 mm
- Available in sets that divide one drawer
- Divider dimensions can be changed and increased



Art.-Nr.	Abb.	B x T (mm)	Gewicht (kg)
102584	20	950 x 320	1,17
102585	21	950 x 420	1,59
102586	22	950 x 520	2,11
108932	23	1195x 320	2,21
108933	24	1195 x 420	2,98
108934	25	1195 x 520	3,70
108935	26	1140 x 320	2,71
108936	27	1140 x 420	3,72
108937	28	1140x 520	4,82



## ACCESSORIES FOR DRAWERS



### LOCK

- For the secure storage of valuable tools and materials
- 2 keys included

**Item no.**

102937

**Weight (kg)**

0.15





## LONG GOODS TRAY

- Variable lengths from 1760 to 3200 mm
- Height: 100 mm
- Flap for easy removal of long tools and materials

Item no.	Depth (mm)	Weight (kg)
102505	230	6.28
102506	300	7.47
102507	400	8.75

## ACCESSORIES FOR LONG GOODS TRAYS



### STAND-OFF

- Adjustable-height stand-off for installing long goods bins and top-mounted bins on the in-vehicle racking system
- **Ranges of adjustment**  
Height: 150 - 250 mm, 250 - 450 mm  
Depth 200 mm

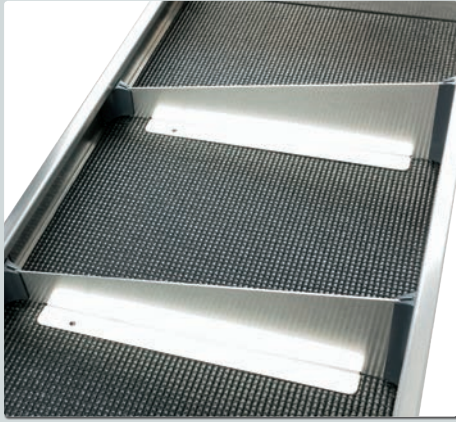
Item no.	Height (mm)	Weight (kg)
103241	150 - 250	0.35
102508	250 - 450	0.53



### FLAP FOR SIDE SUPPORTING FRAMES

- Makes it easy to remove long and narrow parts as well as bulky goods
- Or can allow direct access to technical fixtures

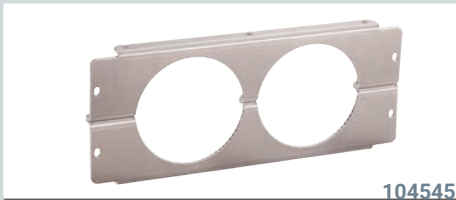
Item no.	Depth (mm)	Height (mm)	Weight (kg)
103243	320	125	0.40
103244	420	125	0.54
103245	520	125	0.68
103246	320	175	0.56
103247	420	175	0.75
103248	520	175	0.95



## TRAY DIVIDER

- To make compartments in the shelving space

Item no.	Depth (mm)	Height (mm)	Weight (kg)
For <b>shallow</b> shelf			
103193	250	50 / 100	0.09
100405	320	50 / 100	0.11
100406	420	50 / 100	0.14
100407	520	50 / 100	0.17
103325	735	50 / 100	0.23
For <b>high</b> shelf			
103200	250	100	0.12
100423	320	100	0.15
100424	420	100	0.20
100425	520	100	0.22
103326	735	100	0.31



104545



104546

## HOLDERS FOR ADJUSTABLE WRENCHES

- Simple, fast and space-saving transport security for wrenches, manhole cover hooks, etc.
- Includes aluminium brackets for supporting frames and matching PE tubes
- Available in various depths
- Rubberised lashing optional

Item no.	Ø (mm)	Depth	Weight (kg)
104544	75	320	0.34
104545	125	420	0.47
104546	75	420	0.44
104547	75	520	0.52

## ACCESSORIES FOR ADJUSTABLE WRENCH HOLDER



### PE PIPE

- PE pipes designed to fit aluminium bracket

Item no.	Ø (mm)	Weight (kg)
104842	125	2.70
104841	75	1.50





## TOP-MOUNTED BIN

- Three variable lengths:  
900 - 1665, 1625 - 2915, 1650 - 3165 mm
- Height: 100 mm
- No side flap

Item no.	W (mm)	L (mm)	Weight (kg)
100846	300	900 - 1665	3.96
100847	400	900 - 1665	4.72
100848	500	900 - 1665	5.54
107727	300	1625 - 2415	5.67
107728	400	1625 - 2415	5.82
107729	500	1625 - 2415	6.78
100849	300	1650 - 3165	7.27
100850	400	1650 - 3165	7.72
100851	500	1650 - 3165	9.12

## ACCESSORIES FOR TOP-MOUNTED BINS



### BRACKET

- With variable angles for installing long goods bins and top-mounted bins on vehicle cross beams

Item no.	Depth (mm)	Weight (kg)
102509	220	0.78





100925



100926



100928

## ALUMINIUM CASE - HIGH

- Light and robust
- Ergonomic handle
- Secure lock
- Can be used with one hand
- Optionally available with 2 dividers and 2 compartment walls or tool insert

Box size (outside):



435 mm



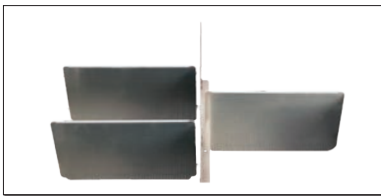
115 mm



332 mm

Item no.	Description	Weight (kg)
100925	Empty	2.10
100926	2 dividers and 2 compartment sides	3.10
100928	23 inset boxes + tool insert	4.12

## ACCESSORIES FOR ALUMINIUM CASE



### DIVIDER AND COMPARTMENT SIDE

- Can be retrofitted

Item no.	Description	Weight (kg)
102874	Divider, D 298mm	0.17
102875	Compartment side, W 116mm	0.03
102876	Compartment side, W 177mm	0.06



### ANTI-SLIP MAT

- Structured, black mat insert
- Slip-resistant and noise-damping
- Sturdy, load-bearing quality
- Machine washable at up to 60°C using standard low-duty detergents
- 2.5 mm thick

Item no.	Description	Weight (kg)
102880	Anti-slip mat	0.13



100919

## ALUMINIUM CASE - SHALLOW

- Light and robust
- Ergonomic handle
- Secure lock
- Can be used with one hand
- Inset boxes made of impact-resistant plastic

Box size (outside):



435 mm



66 mm



332 mm



100920



100924



100921



100925



100923



100927

Item no.	Description	Weight (kg)
100919	Empty	1.41
100920	48 inset boxes	2.23
100924	24 inset boxes	2.23
100921	12 inset boxes	2.23
100922	8 inset boxes	2.48
100923	23 inset boxes	2.37
100927	Insert for 165 burner nozzles	2.09



## BOX STORAGE

- For ALUCA Aluminium boxes, T-BOXXes, M-BOXXes, L-BOXXes 102 and L-BOXXes 136
- Lock pin stops box falling out
- Depth: 420 mm and 520 mm

Item no.	Depth	For	Weight (kg)
106643	420	L-BOXX	0.44
106644	420	M-BOXX	0.44
106645	420	T-BOXX	0.44
107773	420	empty	0.44
109464	520	empty	0.60
109467	520	L-BOXX	0.60
109468	520	T-BOXX	0.60
109469	520	M-BOXX	0.60





## WORKBENCH TOP

- Birch multiplex bench
- Glue-laminated in accordance with BFU 100
- Surface oiled several times
- Flush connection to system
- For mounting on supporting frames
- Available cut to size
- Can be supplied ready for installation



## RAISED EDGE FOR WORKBENCH TOP

- Workbench top as border
- Birch multiplex bench
- Glue-laminated in accordance with BFU 100
- Height 75 mm, thickness 12 mm



75 mm



12 mm



## FITTING FOR FOLDING TABLE

- Made of galvanised steel
- For mounting on the side wall of the system or directly on the side wall of the vehicle
- 3-stage adjustable (70°, 80°, 90°), so optimal when parked on a slope
- Can be combined with laminated worktop – table folds down to save space when not in use

Item no.	W (mm)	Weight (kg)
100909	30 x 200 x 300	1.00
100910	30 x 270 x 400	1.20



## FOLDABLE WORKBENCH

- Multilayer work bench glued and edged with stainless steel U-profiles
- Suitable for vices, with or without turntable
- (Jaw widths 100 and 125 mm)
- Safety lock

Can be retrofitted for many different systems.

Workbench size folded



Workbench size



Item no.	Description	Weight (kg)
100913	Suitable for depth 320 mm	6.30
100894	Suitable for depth 420 mm	6.46
100914	Suitable for depth 520 mm	7.39



## FOLDABLE WORKBENCH WITH SUPPORT FOOT

- **For vehicles with low loading lip**
  - Height from ground to installation level in vehicle between **490 and 670 mm**
  - Foldable with high console
- **For vehicles with high load lip**
  - Height from ground to installation level in vehicle between **640 and 820 mm**
  - Foldable with short console



Item no.	Description	Weight (kg)
108065	With low lip	22.10
108303	With high lip	25,00



## REMOVABLE WORKBENCH

- Birch multiplex bench
- Glue-laminated in accordance with BFU 100
- Side-edged using stainless steel U-profiles
- Accurate and maintenance-free positioning of the worktop
- Worktop lockable
- Integrated into crossbar (except 320 mm depths)
- Vice, turntable, support foot and spring lock available as accessories
- Can be mounted on the left or right side

## ACCESSORIES FOR WORKBENCHES



### SUPPORT FOOT

- Made of aluminium
- For removable or foldable workbench
- To brace heavy work pieces
- Height adjustable from 630 to 1060 mm

Item no.	W x D x H (mm)	Weight (kg)
100892	30 x 30 x 630-1060	1.20



### SPRING LOCK

- Made of galvanised steel
- For secure transport

Item no.	W (mm)	Weight (kg)
100893	70	0.15







## PARALLEL VICE

- Jaws made of hardened steel
- With tubular jaws
- Available in 3 sizes: 100, 125 and 135 mm jaw width

Item no.	Jaw width (mm)	Weight (kg)
106299	100	5.14
106301	125	9.80
106303	135	14.00

## ACCESSORIES FOR PARALLEL VICE



### TURNTABLE

- Made of hardened steel
- With quick clamping lever

Item no.	Jaw width (mm)	Weight (kg)
106300	100	0.82
106302	125	1.49
106304	135	1.90



### REMOVABLE VICE HOLDER

- For vices with jaw widths of 125 mm
- **Available with or without turntable**
- Made of stainless steel and aluminium
- For mounting on vehicle floor
- Without end stop

Item no.	W x H x D (mm)	With turntable	Weight (kg)
101055	210 x 65 x 820	yes	4.35
101056	210 x 235 x 820	yes	4.50
101057	210 x 65 x 820	no	5.35
101058	210 x 235 x 820	no	5.50



## STORAGE BIN

- Made of aluminium
- With anti-slip mat
- For mounting on the side wall
- Available in 3 different widths:
- 300, 400 and 500 mm
- For use on in-vehicle racking system or on side wall cladding of vehicle

Item no.	W x D x H (mm)	Weight (kg)
100934	300 x 100 x 100	0.69
100935	400 x 100 x 100	0.83
100936	500 x 100 x 100	0.97



## HOSE BRACKET

- Made of aluminium
- Ideal for all kinds of hoses and cables
- Available in 2 sizes

Item no.	W (mm)	Weight (kg)
105614	250	0.56
105616	320	1.50



## DIN A4 DRAWING HOLDER

- Made of aluminium
- Offset assembly of several pockets inside each other possible

Item no.	W x H x D (mm)	Weight (kg)
100900	320 x 220 x 87	0,391
109809	250 x 280 x 90	0,415



## STORAGE BOX WITH 2 COMPARTMENTS

- Made of aluminium with protective surrounding profile
- For folders, books, etc.
- As a practical addition to the system or in the
- Driver's cab, e.g. between the seats

 350 mm

 227 mm

 314 mm

Item no.	W x D x H (mm)	Weight (kg)
108938	350 x 313 x 226.5	1.73



## UNIVERSAL STORAGE BOX

The ALUCA universal storage box is versatile. For the storage of DIN A4 ordners as well as for the safe stowage of e.g. fuel canisters. The storage box can also serve as a universal storage between the front seats (for example VW T6). Optional is the supply of a safety belt, which can be easily integrated into the storage box.



 180 mm

 227 mm

 300 mm

Art.-Nr.	B x T x H (mm)	Gewicht (kg)
110553	170 x 290 x 224	1,05



## FUEL CANISTER

- 10 l HDPE black
- with UN approval incl. outlet pipe
- TÜV-certified production, meets the highest safety requirements despite of the low weight.

Art.-Nr.	B x T x H (mm)	Gewicht (kg)
110707	160 x 290 x 331,5	0,485

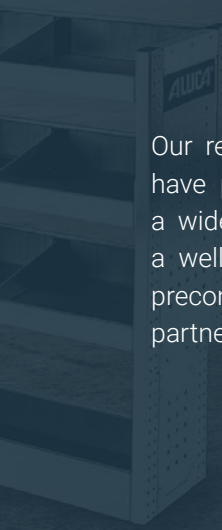








## **Modules**



Our ready-to-install modules for quick-decidors have proven themselves with customers from a wide range of industries. Turn your van into a well-organised service vehicle and choose a preconfigured module. Ask your ALUCA service partner.

- ✓ Available direct and easy to order
- ✓ Suitable for many industries and vehicles
- ✓ Short delivery times
- ✓ Comes pre-assembled allowing quick and easy installation in your vehicle



## MODULE S102

- 3 x Shelf trough, low, with shelf bin separators
- 1 x Shelf trough high
- Anti-slip mats
- Fixing materials

Item no.	W x D x H (mm)	Weight (kg)
106935	765 x 250/320 x 950	14,57



## MODULE S103

- 3 x Shelf trough, low, with shelf bin separators
- 1 x Bottom compartment with flap
- Anti-slip mats
- Fixing materials

Item no.	W x D x H (mm)	Weight (kg)
106936	1010 x 320 x 950	14



## MODULE S105

- 3 x Shelf trough, low, with shelf bin separators
- 1 x Bottom compartment with flap
- Anti-slip mats
- Fixing materials

Item no.	W x D x H (mm)	Weight (kg)
106938	1255 x 250/320 x 950	16





## MODULE S106

- 1 shelf base: 7 x S-BOXX SB03-8
- 2 shelf bases: 3 x S-BOXX SB03-8, 2 x S-BOXX SBB03-8
- 1 x Shelf trough, low, with shelf bin separators
- 1 x Bottom compartment with flap
- Anti-slip mats
- Fixing materials

Item no.	W x D x H (mm)	Weight (kg)
106939	1255 x 250/320 x 950	24,42



## MODULE S107

- 3 x Shelf trough, low, with shelf bin separators
- 1 x Bottom compartment with flap
- Anti-slip mats
- Fixing materials

Item no.	W x D x H (mm)	Weight (kg)
106940	1500 x 250/320 x 950	18



## MODULE S108

- 1 shelf base: 9 x S-BOXX SB03-8
- 1 shelf base: 3 x S-BOXX SB03-8, 3 x S-BOXX SBB03-8
- 1 x Shelf trough, low, with shelf bin separators
- 1 x Bottom compartment with flap
- Anti-slip mat
- Fixing materials

Item no.	W x D x H (mm)	Weight (kg)
106941	1500 x 250/320 x 950	24



## MODULE M101

- 1 x Long goods tray with finely grooved mat
- 3 x Shelf trough, high, with shelf bin separators
- 4 x Shelf trough, low, with shelf bin separators
- 1 x Bottom compartment with flap
- 1 x Lashing strap with clip lock, 1 m long
- Anti-slip mats and fastenings

Item no.	W x D x H (mm)	Weight (kg)
106942	1990 x 250/320 x 1200	32



## MODULE M102

- 1 x Long goods tray with finely grooved mat
- 1 x Shelf trough, high, with shelf bin separators
- 3 x Shelf trough, low, with shelf bin separators
- 1 shelf base: 6 x S-BOXX SB03-8
- 1 shelf base: 2 x S-BOXX SB03-8, 2 x S-BOXX SBB03-8
- 1 x Box restraint system
- 1 x Bottom compartment with flap
- Anti-slip mats and fastenings

Item no.	W x D x H (mm)	Weight (kg)
106943	1990 x 250/320 x 1200	38



## MODULE M103

- 1 x Long goods tray with finely grooved mat
- 1 shelf base: 6 x S-BOXX SB03-8
- 1 shelf base: 3 x S-BOXX SBB03-8
- 3 x Shelf trough, low, with shelf bin separators
- 2 x Drawer - on ball bearings, height 200 mm, divider and compartment sets
- 2 x Shelf compartment with flap
- Anti-slip mats and fastenings

Item no.	W x D x H (mm)	Weight (kg)
106944	1990 x 250/320 x 1200	51



## MODULE M104

- 1 x Long goods tray with finely grooved mat
- 2 x Shelf trough, high, with shelf bin separators
- 4 x Shelf trough, low, with shelf bin separators
- 1 x Bottom compartment with flap
- 1 x Lashing strap with clip lock, 1 m long
- Anti-slip mats and fastenings

Item no.	W x D x H (mm)	Weight (kg)
106945	1745 x 250/320 x 1200	30



## MODULE M105

- 1 x Long goods tray with finely grooved mat
- 1 x Shelf trough, high, with shelf bin separators
- 3 x Shelf trough, low, with shelf bin separators
- 1 shelf base: 4 x S-BOXX SB03-8
- 1 shelf base: 2 x S-BOXX SBB03-8
- 1 x Box restrainer
- 1 x Bottom compartment with flap
- Anti-slip mats and fastenings

Item no.	W x D x H (mm)	Weight (kg)
106946	1745 x 250/320 x 1200	37



## MODULE M106

- 1 x Long goods tray with finely grooved mat
- 1 shelf base: 6 x S-BOXX SB03-8
- 1 shelf base: 2 x S-BOXX SBB03-8
- 2 x Shelf trough, low, with shelf bin separators
- 2 x Drawer - on ball bearings, height 200 mm, divider and compartment sets
- 2 x Shelf compartment with flap
- Anti-slip mats and fastenings

Item no.	W x D x H (mm)	Weight (kg)
106947	1745 x 250/320 x 1200	48





## MODULE M107

- 1 x Shelf trough, high, with shelf bin separators
- 1 shelf base: 6 x S-BOXX SB04-9
- 2 shelf bases: 4 x T-BOXX
- 1 x Bottom compartment with flap
- Anti-slip mat and fastenings

Item no.	W x D x H (mm)	Weight (kg)
106948	1010 x 420 x 950	34,15



## MODULE M108

- 1 x Shelf trough, high, with shelf bin separators
- 1 shelf base: 4 x S-BOXX SB03-8, 1 x S-BOXX SBB03-8
- 1 shelf base: 2 x S-BOXX SB03-8, 2 x S-BOXX SBB03-8
- 1 x Bottom compartment with flap
- Anti-slip mat and fastenings

Item no.	W x D x H (mm)	Weight (kg)
106949	1010 x 420 x 950	22



## MODULE M109

- 3 x Shelf trough, low, with shelf bin separators
- 1 x Bottom compartment with flap
- Anti-slip mats
- Fixing materials

Item no.	W x D x H (mm)	Weight (kg)
106950	1010 x 420 x 950	17



## MODULE M110

- 2 x Shelf trough, high, with shelf bin separators
- 1 x Drawer - on ball bearings, height 100 mm, plastic box set
- 2 x Drawer - on ball bearings, height 150 mm, divider and compartment sets
- All drawers accessible via sliding doors
- 4 x Rack with 4 x T-BOXX
- 1 x Bottom compartment with flap
- Anti-slip mat and fastenings

Item no.	W x D x H (mm)	Weight (kg)
106951	1040 x 420 x 950	45



## MODULE M111

- 1 x Long goods tray with finely grooved mat
- 2 x Shelf trough, high, with shelf bin separators
- 4 x Shelf trough, low, with shelf bin separators
- 1 x Bottom compartment with flap
- 1 x Lashing strap with clip lock, 1 m long
- Anti-slip mats and fastenings

Item no.	W x D x H (mm)	Weight (kg)
106952	2235 x 250/320 x 1200	34



## MODULE M112

- 1 x Long goods tray with finely grooved mat
- 1 x Shelf trough, high, with shelf bin separators
- 3 x Shelf trough, low, with shelf bin separators
- 1 shelf base: 6 x S-BOXX SB03-8
- 1 shelf base: 2 x S-BOXX SB03-8, 2 x S-BOXX SBB03-8
- 1 x Box restraint system
- 1 x Bottom compartment with flap
- Anti-slip mats and fastenings

Item no.	W x D x H (mm)	Weight (kg)
106953	2235 x 250/320 x 1200	40



## MODULE M113

- 1 x Long goods tray with finely grooved mat
- 1 shelf base: 3 x S-BOXX SBB03-8
- 1 shelf base: 7 x S-BOXX SB03-8
- 2 x Shelf trough, low, with shelf bin separators
- 2 x Drawer - on ball bearings, height 200 mm, divider and compartment sets
- 2 x Shelf compartment with flap
- Anti-slip mats and fastenings

Item no.	W x D x H (mm)	Weight (kg)
106954	2235 x 250/320 x 1200	49



## MODULE M114

- 1 x Shelf trough, high, with shelf bin separators
- 2 x Shelf trough, low, with shelf bin separators
- 1 x Bottom compartment with flap
- Anti-slip mats
- Fixing materials

Item no.	W x D x H (mm)	Weight (kg)
106955	1255 x 420 x 950	19



## MODULE M115

- 1 x Shelf trough, high, with shelf bin separators
- 1 shelf base: 1 x T-BOXX, 4 x S-BOXX SB04-9
- 2 shelf bases: 2 x T-BOXX, 8 x S-BOXX SB04-5
- 1 x Bottom compartment with flap
- Anti-slip mat
- Fixing materials

Item no.	W x D x H (mm)	Weight (kg)
106956	1255 x 420 x 950	35





## MODULE M116

- 1 x Shelf trough, high, with shelf bin separators
- 2 shelf bases: 6 x S-BOXX SB04-9, 1 x S-BOXX SBB04-9
- 1 x Bottom compartment with flap
- Anti-slip mat
- Fixing materials

Item no.	W x D x H (mm)	Weight (kg)
106957	1255 x 420 x 950	26



## MODULE M117

- 2 x Shelf trough, high, with shelf bin separators
- 1 x Drawer - on ball bearings, height 100 mm, plastic box set
- 2 x Drawer - on ball bearings, height 150 mm, divider and compartment sets
- All drawers accessible via sliding doors
- 4 x Rack with 4 x T-BOXX
- 1 x Bottom compartment with flap
- Anti-slip mat and fastenings

Item no.	W x D x H (mm)	Weight (kg)
106958	1255 x 420 x 950	56



## MODULE M118

- 1 x Shelf trough, high, with shelf bin separators
- 2 x Shelf trough, low, with shelf bin separators
- 1 x Bottom compartment with flap
- Anti-slip mats
- Fixing materials

Item no.	W x D x H (mm)	Weight (kg)
106959	1255 x 420 x 950	19



## MODULE M119

- 1 x Shelf trough, high, with shelf bin separators
- 3 shelf bases: 3 x T-BOXX, 12 x S-BOXX SB04-5
- 1 x Bottom compartment with flap
- Anti-slip mat
- Fixing materials

Item no.	W x D x H (mm)	Weight (kg)
106960	1255 x 420 x 950	36,33



## MODULE M120

- 2 x Shelf trough, high, with shelf bin separators
- 2 x Drawer - on ball bearings, height 100 mm, plastic box set, divider and compartment sets
- 2 x Drawer - on ball bearings, height 150 mm, divider and compartment sets
- All drawers accessible via sliding doors
- 2 x Rack with 2 x T-BOXX
- 1 x Bottom compartment with flap
- Anti-slip mat and fastenings

Item no.	W x D x H (mm)	Weight (kg)
106961	1255 x 420 x 950	53







## MODULE L101

- 1 x Long goods tray with finely grooved mat
- 2 x Shelf trough, high, with shelf bin separators
- 4 x Shelf trough, low, with shelf bin separators
- 1 x Bottom compartment with flap
- 1 x Lashing strap with clip lock, 2 m long
- Anti-slip mats and fastenings

Item no.	W x D x H (mm)	Weight (kg)
106962	2480 x 250/320 x 1200	35



## MODULE L102

- 1 x Long goods tray with finely grooved mat
- 1 x Shelf trough, high, with shelf bin separators
- 3 x Shelf trough, low, with shelf bin separators
- 1 shelf base: 7 x S-BOXX SB03-8
- 1 shelf base: 1 x S-BOXX SB03-8, 3 x S-BOXX SBB03-8
- 1 x Box restraint system
- 1 x Bottom compartment with flap
- Anti-slip mats and fastenings

Item no.	W x D x H (mm)	Weight (kg)
106963	2480 x 250/320 x 1200	43

Sample illustration - see scope of supply\*



## MODULE L103

- 1 x Long goods tray with finely grooved mat
- 1 shelf base: 1 x S-BOXX SB03-8, 3 x S-BOXX SBB03-8
- 1 shelf base: 7 x S-BOXX SB03-8
- 2 shelf bases: 8 x S-BOXX SB03-8
- 2 x Shelf trough, low, with shelf bin separators
- 2 x Drawer - on ball bearings, height 150 mm, divider and compartment sets
- 2 x Shelf compartment with flap
- Anti-slip mats and fastenings

Item no.	W x D x H (mm)	Weight (kg)
106964	2480 x 250/320 x 1200	47

Sample illustration - see scope of supply\*



## MODULE L104

- 1 x Long goods tray with finely grooved mat
- 2 x Shelf trough, high, with shelf bin separators
- 4 x Shelf trough, low, with shelf bin separators
- 1 x Bottom compartment with flap
- 1 x Lashing strap with clip lock, 2 m long
- Anti-slip mats
- Fixing materials

Item no.	W x D x H (mm)	Weight (kg)
106965	2725 x 250/320 x 1200	37



## MODULE L105

- 1 x Long goods tray with finely grooved mat
- 1 x Shelf trough, high, with shelf bin separators
- 3 x Shelf trough, low, with shelf bin separators
- 1 shelf base: 7 x S-BOXX SB03-8
- 1 shelf base: 1 x S-BOXX SB03-8, 3 x S-BOXX SBB03-8
- 1 x Box restraint system
- 1 x Bottom compartment with flap
- Anti-slip mats and fastenings

Item no.	W x D x H (mm)	Weight (kg)
106966	2725 x 250/320 x 1200	45

Sample illustration - see scope of supply\*



## MODULE L106

- 1 x Long goods tray with finely grooved mat
- 1 shelf base: 1 x S-BOXX SB03-8, 4 x S-BOXX SBB03-8
- 1 shelf base: 7 x S-BOXX SB03-8
- 2 shelf bases: 12 x S-BOXX SB03-8
- 2 x Shelf trough, low, with shelf bin separators
- 2 x Drawer - on ball bearings, height 150 mm, divider and compartment sets
- 2 x Shelf compartment with flap
- Anti-slip mats and fastenings

Item no.	W x D x H (mm)	Weight (kg)
106967	2725 x 250/320 x 1200	52

\*Module widths and number of S-BOXXes vary.



## MODULE L107

- 1 x Long goods tray with finely grooved mat
- 2 x Shelf trough, high, with shelf bin separators
- 4 x Shelf trough, low, with shelf bin separators
- 1 x Bottom compartment with flap
- 1 x Lashing strap with clip lock, 2 m long
- Anti-slip mats and fastenings

Item no.	W x D x H (mm)	Weight (kg)
106968	2970 x 250/320 x 1200	39



Sample illustration - see scope of supply\*

## MODULE L108

- 1 x Long goods tray with finely grooved mat
- 1 x Shelf trough, high, with shelf bin separators
- 3 x Shelf trough, low, with shelf bin separators
- 1 shelf base: 5 x S-BOXX SB03-8, 2 x S-BOXX SBB03-8
- 1 shelf base: 5 x S-BOXX SB03-8, 2 x S-BOXX SBB03-8
- 1 x Box restraint system
- 1 x Bottom compartment with flap
- Anti-slip mats and fastenings

Item no.	W x D x H (mm)	Weight (kg)
106969	2970 x 250/320 x 1200	47



Sample illustration - see scope of supply\*

## MODULE L109

- 1 x Long goods tray with finely grooved mat
- 1 shelf base: 5 x S-BOXX SB03-8
- 1 shelf base: 7 x S-BOXX SB03-8
- 2 shelf bases: 14 x S-BOXX SB03-8, 5 x S-BOXX SBB03-8
- 2 x Shelf trough, low, with shelf bin separators
- 2 x Drawer - on ball bearings, height 150 mm, divider and compartment sets
- 2 x Shelf compartment with flap
- Anti-slip mats and fastenings

Item no.	W x D x H (mm)	Weight (kg)
106970	2970 x 250/320 x 1200	55





## MODULE L110

- 1 x Shelf trough, high, with shelf bin separators
- 2 x Shelf trough, low, with shelf bin separators
- 1 x Bottom compartment with flap
- Anti-slip mats
- Fixing materials

Item no.	W x D x H (mm)	Weight (kg)
106971	1500 x 420 x 950	21



## MODULE L111

- 1 x Shelf trough, high, with shelf bin separators
- 3 shelf bases: 6 x T-BOXX, 9 x S-BOXX SB04-5
- 1 x Bottom compartment with flap
- Anti-slip mat
- Fixing materials

Item no.	W x D x H (mm)	Weight (kg)
106972	1500 x 420 x 950	33



## MODULE L112

- 2 x Shelf trough, high, with shelf bin separators
- 1 x Drawer - on ball bearings, height 100 mm, plastic box set
- 2 x Drawer - on ball bearings, height 150 mm, divider and compartment sets
- All drawers accessible via sliding doors
- 3 shelf bases: 3 x S-BOXX SB04-5, 3 x T-BOXX
- 1 x Bottom compartment with flap
- Anti-slip mats and fastenings

Item no.	W x D x H (mm)	Weight (kg)
106973	1500 x 420 x 950	59

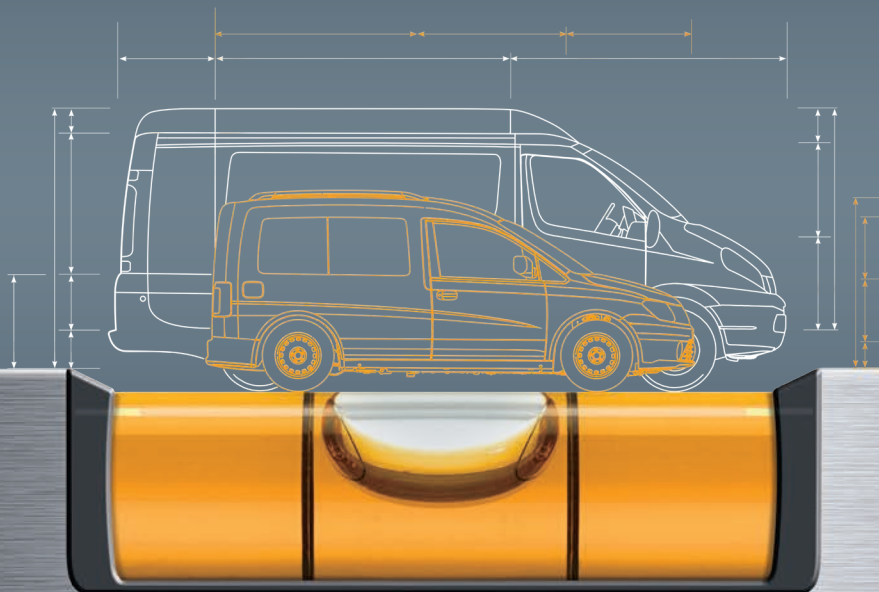


## Module L113

- 2 x Shelf trough, high, with shelf bin separators
- 2 x Drawer - on ball bearings, height 100 mm, plastic box set, divider and compartment sets
- 1 x Drawer - on ball bearings, height 150 mm, divider and compartment sets
- All drawers accessible via sliding doors
- 3 shelf bases: 3 x S-BOXX SB04-5, 3 x T-BOXX
- 1 x Bottom compartment with flap
- Anti-slip mat and fastenings

Item no.	W x D x H (mm)	Weight (kg)
106974	1500 x 420 x 950	60

***Perfect in-vehicle racking systems  
for every size of vehicle***



[www.aluca.de](http://www.aluca.de)







深南  
Shennan

**ALUCA**  
SYSTEM

TOTAL  
D  
P.23





## ***Cargo area equipment***

The ALUCA product range includes various components for the cargo hold, such as floor

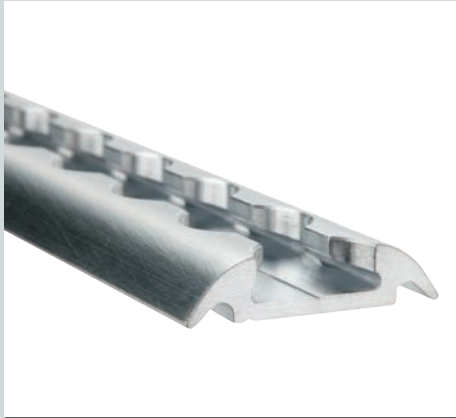
panels, side panels and load restraints. Ask your ALUCA service partner for advice.



## ANGLED ALUMINIUM LASHING RAILS, 28 MM

- **For screwing**
- Suitable for all lashing straps, with fittings and locking ratchets

Item no.	L (mm)	Weight (kg)
107009	Sold by the metre	0.46
107010	950	0.44
107011	1050	0.48
103679	3000	1.38



## ALUMINIUM LASHING RAILS, SEMI CIRCLE, 42 MM

- **For screwing**
- Suitable for all lashing straps, with fittings and locking ratchets

Item no.	L (mm)	Weight (kg)
100974	Sold by the metre	0.51
100963	990	0.51
100964	1490	0.77
100965	3000	1.54

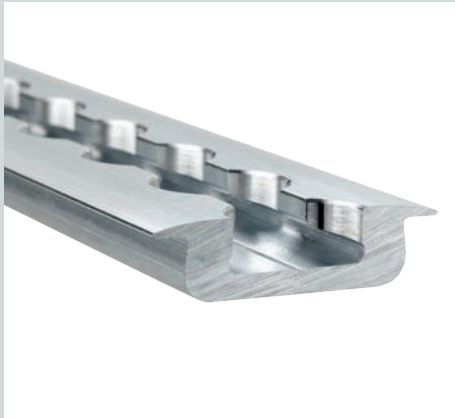


## ALUMINIUM FLOOR LASHING RAILS

- **For insertion in floor panel from below**
- Suitable for all lashing straps, with fittings and locking ratchets

Item no.	L (mm)	Weight (kg)
100975	Sold by the metre	0.76
103676	2998	2.30





## ALUMINIUM FLOOR LASHING RAILS

- For insertion in floor panel from above
- Suitable for all lashing straps, with fittings and locking ratchets

Item no.	L (mm)	Weight (kg)
100976	Sold by the metre	0.69
103677	2998	2.07

## ACCESSORIES FOR LASHING RAILS



### ALUMINIUM LASHING POINT

- For flexible attachment in and on vehicle or vehicle equipment

Item no.	L x W (mm)	Weight (kg)
106153	48 x 28	0.04



### FITTING

- For lashing rails and points
- With slot for strap
- For loads up to 500 daN

Item no.	L x W (mm)	Weight (kg)
106366	48 x 28	0.05



### SCREW FITTING

- Made of galvanised steel
- For fitting on lashing rail for strong screw attachment of accessories
- M8 thread

Item no.	Clamping range (mm)	Weight (kg)
101012	0 - 2	0.04
103681	0 - 17	0.04



## LASHING STRAP WITH RATCHET AND FITTING

- For direct use with lashing rails
- Tensioning force up to 300 daN
- Available in 3 lengths and different fixed end lengths
- Also available as a set with 4 or 5 fittings

Item no.	L x W (mm)	Description	Weight (kg)
100979	1000 x 25	Fixed end 130 mm	0.50
100980	2000 x 25	Fixed end 250 mm	0.53
100981	3000 x 25	Fixed end 500 mm	0.57
109472	5000 x 25	Fixed end 500 mm	0.90
103268	2200 x 25	With 4 fittings	0.78
103343	2500 x 25	With 5 fittings	0.85



## LASHING STRAP WITH RATCHET AND FLAT HOOK

- Tensioning force up to 600 daN
- Available in 3 lengths

Item no.	L x W (mm)	Description	Weight (kg)
100991	1000 x 25	Fixed end 130 mm	0.52
100992	2000 x 25	Fixed end 250 mm	0.55
103674	5000 x 25	Fixed end 500 mm	0.75



## TENSION STRAP WITH BUCKLE AND FLAT HOOK

- For quick and easy fixing of goods
- Tensioning force of 150 daN
- Available in 2 lengths

Item no.	L x W (mm)	Description	Weight (kg)
100994	1000 x 25	Fixed end 130 mm	0.18
100995	2000 x 25	Fixed end 250 mm	0.22



## TENSION STRAP WITH BUCKLE AND FITTING

- For direct use with lashing rails
- Tensioning force up to 150 daN
- Available in 3 lengths

Item no.	L x W (mm)	Description	Weight (kg)
100982	1000 x 25	Fixed end 130 mm	0.20
100983	2000 x 25	Fixed end 250 mm	0.24
100984	3000 x 25	Fixed end 500 mm	0.28



## STRAPPING STRAP WITH CLAMPING LOCK

- For direct use with lashing rails
- Tensioning force up to 300 daN
- Available in 2 lengths

Art.-Nr.	L x B (mm)	Gewicht (kg)
110704	1000 x 25	0,096
110705	2000 x 25	0,126



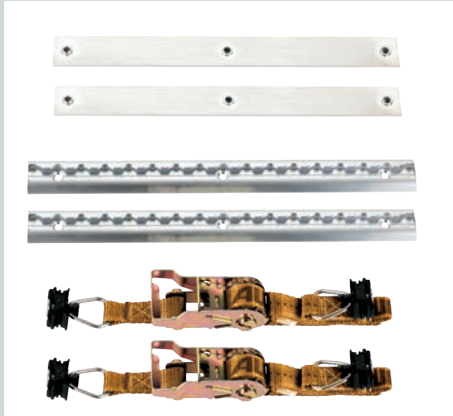




## GAS CYLINDER TRANSPORT KIT

- For small gas cylinders
- Lashing rails
- Ratchet lashing strap, 1000 mm
- Cross beam as safe-bar
- Tensioning force up to 300 daN
- Available for 3 panel widths: 320, 420 and 520 mm

Item no.	Panel width (mm)	Weight (kg)
101004	320	0.69
101005	420	0.75
101006	520	0.81



## GAS CYLINDER TRANSPORT KIT

- For large gas cylinders
- 2x lashing rail
- 2x ratchet lashing strap, 1000 mm
- 2x cross-beam for reinforcement
- Tensioning force up to 300 daN
- Available for 3 panel widths: 320, 420 and 520 mm

Item no.	Panel width (mm)	Weight (kg)
101007	320	1.38
101008	420	1.50
101009	520	1.62



## LOAD SECURING NET

- With all-round ratchet lock ring strap or clamp lock strap
- For lashing down different package shapes
- Available in different sizes and machine width on request

Art.-Nr.	Material	L (mm)	Gewicht (kg)
101014	belt	1200 x 1800	1,65
108316	rope	1500 x 600	0,89



## LOCKING RATCHET

- Load capacity of up to 450 daN
- Ergonomic control lever – for easy clamping and release action
- Telescopic function – only one bar required for all positions in the car
- No tools required for adjustment
- Horizontal installation possible – maximum flexibility and versatility
- Anti-rotation lock at the top – for flexible use in the airline rail and the floor rail with round holes
- Airline slide-in profile allows a multitude of additional applications on all four sides

### KIM 4x4

For fixed applications

### KIM 4x4 Airline

With fixed length and Airline slide-in profile for maximum flexibility

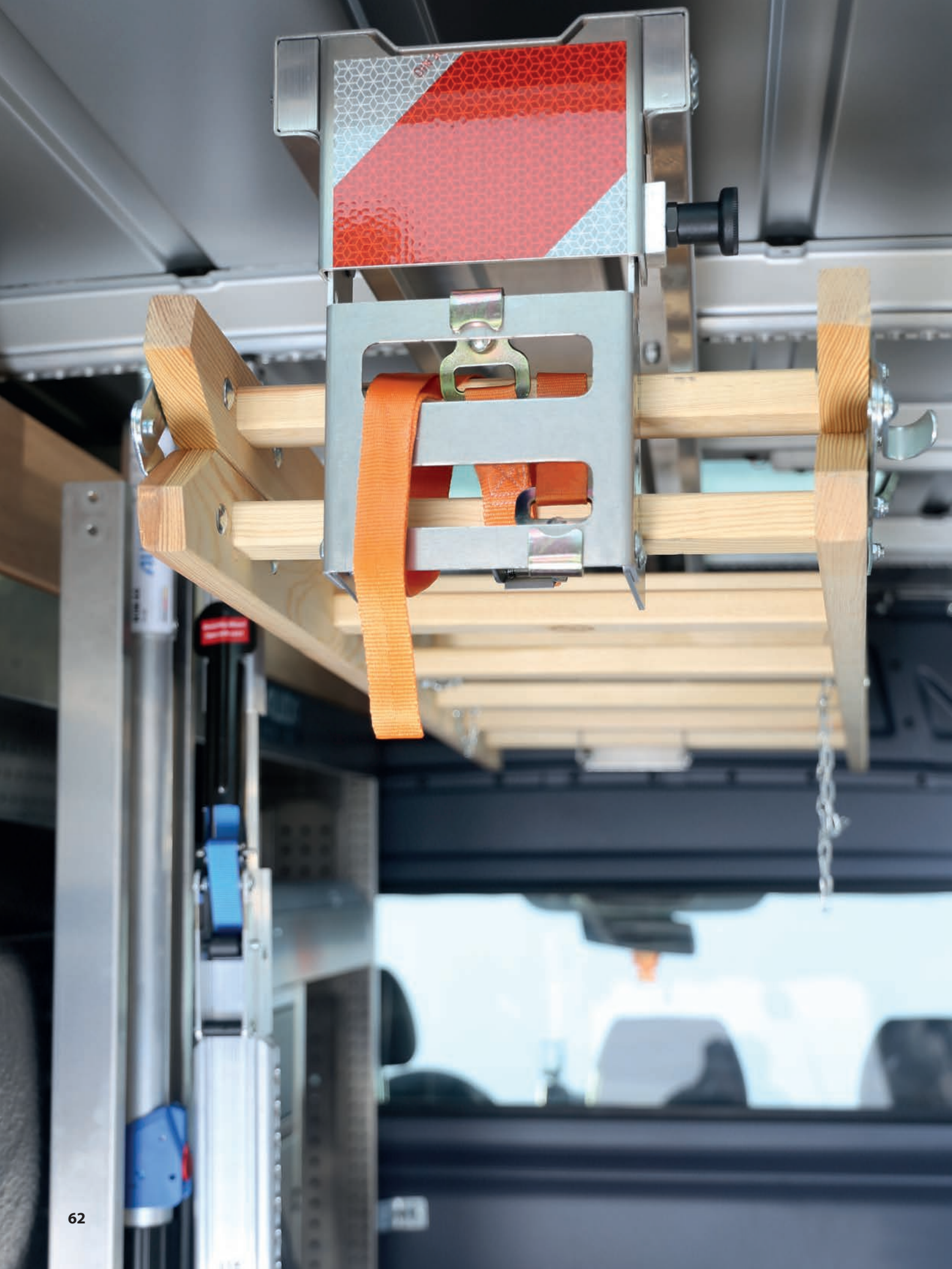
### KIM 4x4 Profi

Variable range of applications due to 500 mm telescopic travel

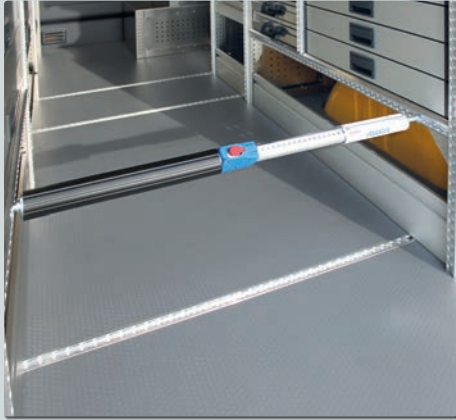
### KIM 4x4 Airline Profi

With variable length and Airline slide-in profile for vertical and horizontal use





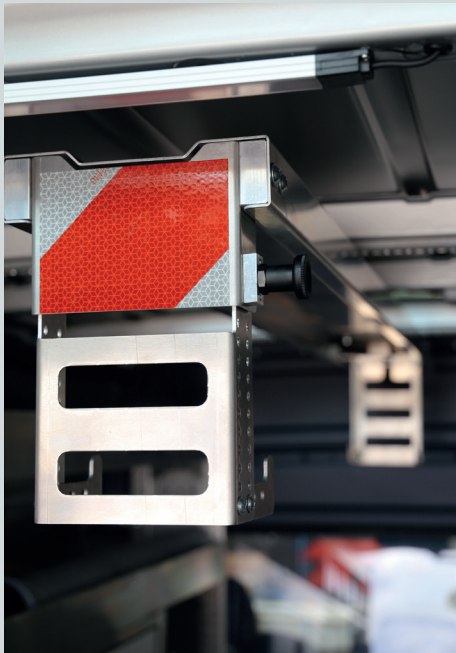




## TELESCOPIC RATCHET

- Made of aluminium
- Quickly adjustable without tools
- Can be used vertically and horizontally
- Suitable for all lashing rails and rod rails
- Available with 4 ranges of adjustment

Item no.	L (mm)	Weight (kg)
103413	650 - 900	1.75
103512	1250 - 1750	2.65
103153	1550 - 2050	2.80
103360	2000 - 2500	3.20



## LADDER HOLDER

The ALUCA ladder holder is primarily meant to safely transport ladders inside a commercial vehicle. Transport within the vehicle protects ladders from external weather influences, e.g. Rain, snow or ice, which might be a safety hazard. In the case of wooden ladders, transport inside the vehicle is strongly recommended as to limit the weather influences on the material properties. Stowage of a ladder inside is quickly done with a few simple steps, especially when it is concerning high vehicles.

Art.-Nr.	B x T x H (mm)	Gewicht (kg)
110627	140 x 1800 x 265	5,70



## ANTI-SLIP MAT FOR DRAWERS AND SHELF BINS

- Structured, black mat insert
- Slip-resistant and noise-damping
- Sturdy, load-bearing quality
- Machine washable at up to 60°C using standard low-duty detergents
- 2.5 mm thick
- Available cut or in a roll

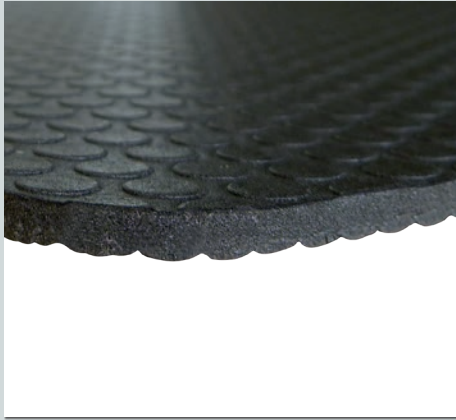
Item no.	D (mm)	Usage	Weight (kg)
104466	238	Shelf trough, base 250 mm	0.18
102700	268	Drawer, turned block, depth 320	0.20
102701	291	Shelf base, base 300 mm	0.22
102702	308	Shelf trough, base 320 mm	0.23
104468	317	dimension2 drawer, panel width 360	0.24
102703	368	Drawer, turned block, depth 420	0.29
102704	391	Shelf base, base 400 mm	0.29
102705	408	Shelf trough, base 420 mm	0.31
104469	417	dimension2 drawer, panel width 460	0.32
102706	468	Drawer, turned block, depth 520	0.35
102707	491	Shelf base, base 500 mm	0.37
102708	508	Shelf trough, base 520 mm	0.38
105506	540	dimension2 panel width 582.5	0.41
104470	663	dimension2 drawer, panel width 705	0.51
102936	685	Drawer, turned block, depth 735	0.52
104403	723	Shelf trough, base 735 mm	0.54
102709	1000	Universal	0.75
102710	1200	Universal	0.90



## FINELY SERRATED MAT

- Suitable for protecting the long-goods or item bin
- Slip-resistant and noise-damping

Item no.	Depth (mm)	Usage	Weight (kg)
102697	292	Shelf base 300 mm	0.86
102698	392	Shelf base 400 mm	1.16
102699	492	Shelf base 500 mm	1.45
104480	1000	Universal	2.95
104481	1200	Universal	3.55



## ANTI-SLIP MATS, AVAILABLE IN ROLLS

- Floor mats for transporter
- Extremely sturdy and resistant to tearing
- 4.5 mm thick
- Very high friction coefficient of up to 10 t/m<sup>2</sup>
- Depending on friction surface –  $\mu$  0.94-1.49
- Damps noise and insulates against cold
- Sealed surface so no absorption of liquids
- Resistant to acids, alkalis as well as petrol and diesel
- Can be rolled tight and is easy to store

Item no.	W x L (mm)	Weight (kg)
105737	800 x 4000	6.40
105738	1000 x 4000	8.20
105739	1200 x 4000	9.80
105230	1600 x 4000	12.80
105740	1000 x 8000	16.40



## ANTI-SLIP MATS, PADS

- Prevent scratching and shifting of loads
- Extremely sturdy and resistant to tearing
- 4.5 mm thick
- Very high friction coefficient of up to 10 t/m<sup>2</sup>
- Depending on friction surface –  $\mu$  0.94-1.49
- Suitable as an intermediate protection layer
- Easy to handle and light
- Reusable
- Stores compactly, fits any drawer

Item no.	W x L (mm)	Weight (kg)
109450	150 x 150	0.06
105741	200 x 240	0.10
105742	600 x 800	1.00
105743	1200 x 800	2.00









## ***ALUCA boxx system***

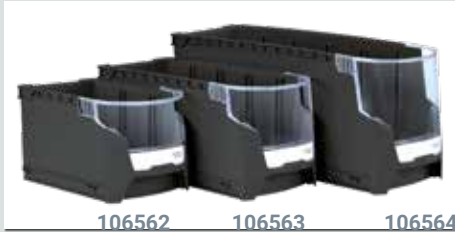
ALUCA boxxes are a universal and individual storage system for flexible use in ALUCA and ALUCA dimension2 in-vehicle racking systems. Tools and equipment can be stored safely in the boxxes.

- ✓ Flexible and compatible with System ALUCA and ALUCA dimension2
- ✓ They keep the vehicle neat and tidy.
- ✓ Shortages can be detected immediately and rectified.
- ✓ Work flows are more effective



## S-BOXXes

- Storage boxes
- Transparent front for quick identification
- Available in 3 depths, 4 heights and 2 widths
- For integration into any ALUCA in-vehicle racking system
- Partitions and labels available as accessories
- For use on shelves in combination with system rails



Item no.	Description	W x D x H (mm)	Weight (kg)
106562	SB 03-8	150 x 243 x 136	0.35
106588	SB 04-5	150 x 347 x 78	0.32
106563	SB 04-9	150 x 347 x 153	0.51
106564	SB 05-11	150 x 455 x 187	0.74
106565	SBB 03-8	300 x 243 x 136	0.56
106566	SBB 04-9	300 x 347 x 153	0.77
106567	SBB 05-11	300 x 455 x 187	1.07

## ACCESSORIES FOR S-BOXXes



### PARTITIONS AND LABELS

- Partition walls for S-BOXXes
- Available in different widths
- For dividing S-BOXXes into different segments
- Labels for S-BOXXes in 3 different sizes



Item no.	Partition wall	Item no.	Label
106575	TWSB 03-8	106591	SB BK
106581	TWSB 04-5	106593	SB 04-5 BK
106576	TWSB 04-9	106591	SB BK
106577	TWSB 05-11	106591	SB BK
106578	TWSB 03-8	106592	SB BK
106579	TWSB 04-9	106592	SB BK
106580	TWSB 05-11	106592	SB BK







109271



109268



109274



109272



109269



109275



109273



109270

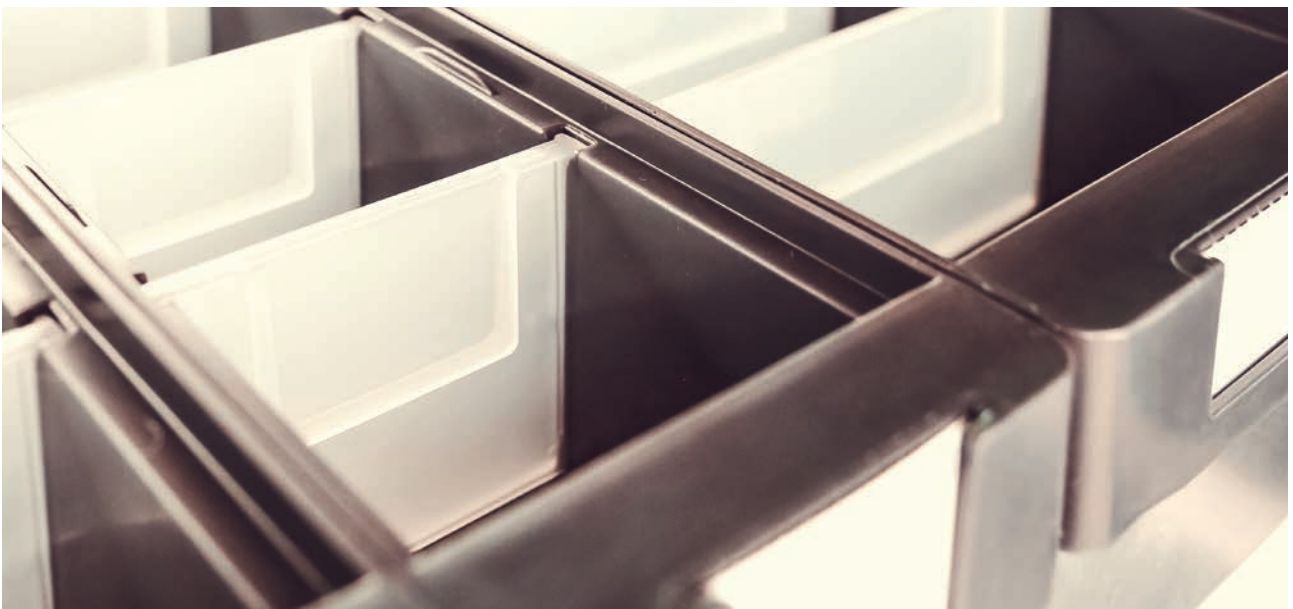


109276

## SHELF BINS

- Sturdy design of shelf bins and partition walls
- Smooth interior walls
- Made of polypropylene (PP), light grey
- Can be integrated into the shelf bins and shelf compartment bases of ALUCA systems
- For the storage of small items
- Available in various sizes
- Delivery includes labels
- Partition walls optional

Item no.	W x D x H (mm)	Weight (kg)
109271	93 x 300 x 83	0,20
109268	93 x 400 x 83	0,28
109274	93 x 500 x 83	0,30
109272	152 x 300 x 83	0,26
109269	152 x 400 x 83	0,34
109275	152 x 500 x 83	0,44
109273	186 x 300 x 83	0,35
109270	186 x 300 x 83	0,38
109276	186 x 300 x 83	0,50



## ACCESSORIES FOR SHELF BINS



### PARTITION WALLS

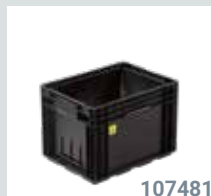
- Partitions for shelf bins
- Available in different widths
- Used to divide shelf boxes into different segments

Item no.	Partition wall Pack of 1	Item no.	Partition wall Pack of 25
102815	For width 93 mm	102816	For width 93 mm
102817	For width 152 mm	102818	For width 152 mm
102819	For width 186 mm	102820	For width 186 mm



### EUROBOXEs

- Made of impact-resistant plastic
- Available in 4 sizes
- Electrically conductive (antistatic finish)
- Composite base on outer edge of container
- Stacking feet for stacking in groups



Item no.	W x D x H (mm)	Weight (kg)
107480	400 x 300 x 150	1.40
107481	400 x 300 x 280	2.05
107482	600 x 400 x 150	2.33
107483	600 x 400 x 280	3.30





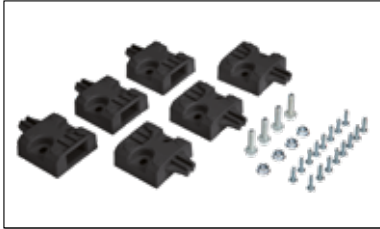
## T-BOXXes

- Made of impact-resistant plastic
- Transparent lid made of strong polycarbonate
- Grating in the lid and base for inset boxes so contents do not mix
- Large opening angle
- Easy to carry thanks to rubberised handle
- Outside dimensions W x D x H: 440 x 350 x 80 mm



Item no.	Description	Weight (kg)
106522	Without inset boxes	1.59
106607	48x A3 red	2.30
106608	24x B3 yellow	2.30
106609	12x C3 blue	2.30
106610	8x D3 green	2.30
106611	12x A3 red, 6x B3 yellow, 3x C3 blue, 2x D3 green	2.33
106613	4x G3 green	2.30

## ACCESSORIES FOR T-BOXXES



### T-BOXX MOUNTING ADAPTER SET

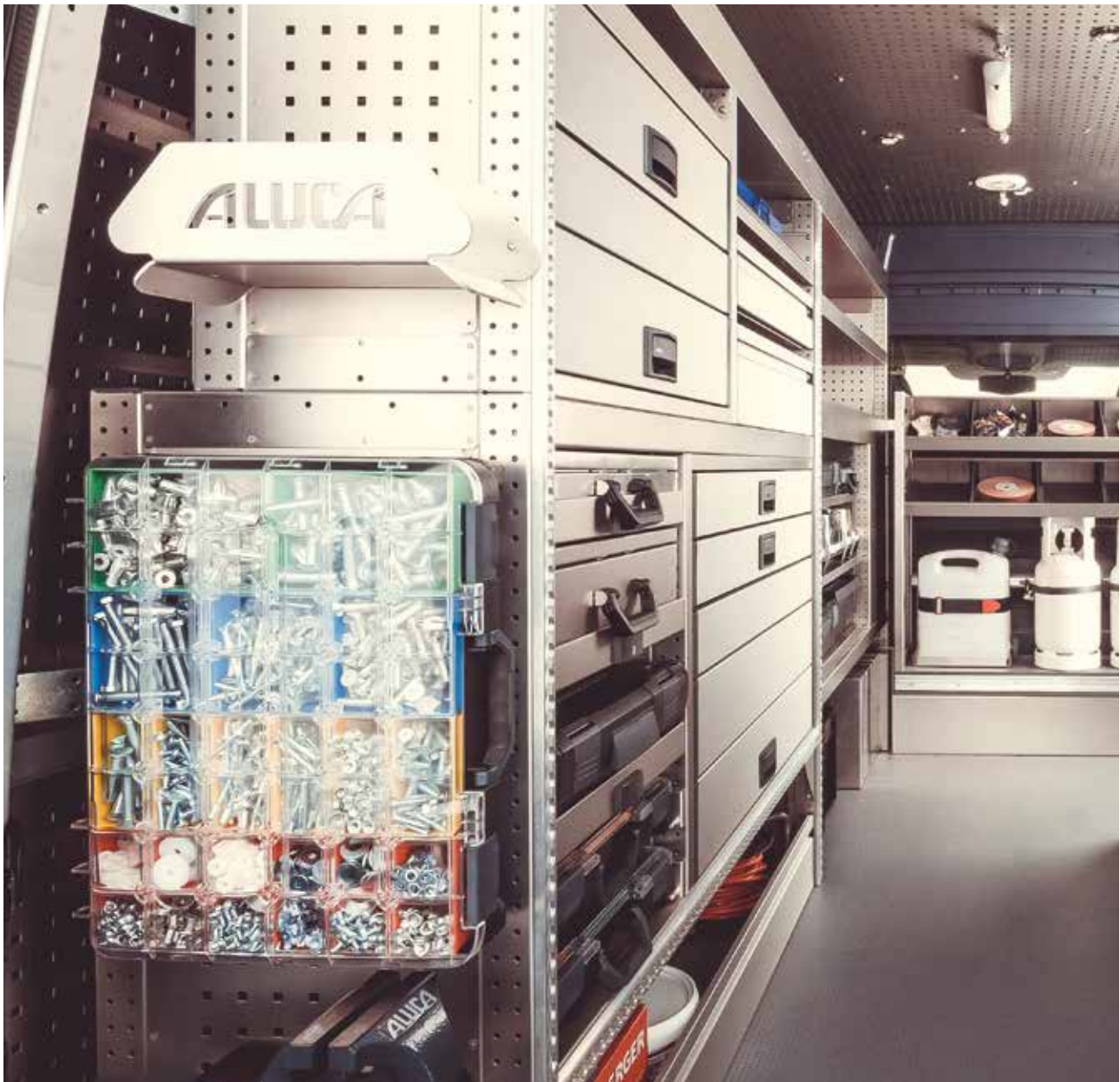
- allows T-BOXX to be attached to the ALUCA side wall system and the door cladding
- Two adapters are attached to the supporting material, and the other four screwed to the base of the T-BOXX
- Fittings included

**Item no.**

106521

**Weight (kg)**

0.28





106526

## L-BOXXes 102

- Made of impact-resistant ABS plastic
- Can be connected firmly together using the quick click system and released again with the press of a button
- Outside dimensions W x D x H: 447 x 357 x 117 mm



106614



106615



106616



106620

Item no.	Description	Weight (kg)
106526	Without inset boxes	2.10
106614	2x U3, 6x partition 30x A3 red	2.90
106615	2x U3, 6x partition 15x B3 yellow	2.90
106616	2x U3, 6x partition 5x D3 green	2.90
106620	Perforated foam	2.20

## ACCESSORIES FOR L-BOXX 102



106530



106534



106539



106542

Item no.	Description	Weight (kg)
106530	Cover inlay for empty box	0.05
106534	Perforated foam	0.16
106539	Document pocket	0.32
106542	Tool chart	0.50





ALUCA boxx system



106527

## L-BOXXes 136

- Made of impact-resistant ABS plastic
- Can be connected firmly together using the quick click system and released again with the press of a button
- Available with tool chart, perforated foam, document pocket or laptop holder
- Outside dimensions W x D x H: 442 x 357 x 151 mm



106621



106622

Item no.	Description	Weight (kg)
106527	Empty	2.65
106621	With perforated foam	2.97
106622	Tool chart	3.15





106528

## L-BOXXes 238

- Made of impact-resistant ABS plastic
- Can be connected firmly together using the quick click system and released again with the press of a button
- Outside dimensions W x D x H: 442 x 357 x 253 mm



106623



106629

Item no.	Description	Weight (kg)
106528	Empty	2.80
106623	With tool chart	3.10
106629	Partition set 3x G3 green	4.88

## ACCESSORIES FOR L-BOXX 136



106530



106534



106539



106542

Item no.	Description	Weight (kg)
106530	Cover inlay for empty box	0.05
106534	Perforated foam	0.16
106539	Document pocket	0.32
106542	Tool chart	0.50

## ACCESSORIES FOR L-BOXX 238



106530



106542

Item no.	Description	Weight (kg)
106530	Cover inlay for empty box	0.05
106542	Tool chart	0.50





106529

## L-BOXXes 374

- Made of impact-resistant ABS plastic
- Can be connected firmly together using the quick click system and released again with the press of a button
- Outside dimensions W x D x H: 442 x 357 x 389 mm



106631



106625



106626

Item no.	Description	Weight (kg)
106529	Empty	3.65
106631	Partition set, 3x G3 green	5.10
106625	2x silicone cartridge insert	3.60
106626	2x foam cartridge insert	3.60

## ACCESSORIES FOR L-BOXX 374



106530



106537



106536



106539

Item no.	Description	Weight (kg)
106530	Cover inlay for empty box	0.05
106539	Document pocket	0.32
106537	Silicone cartridge insert	0.27
106536	Foam cartridge insert	0.25



## EQUIPMENT HOLDER FOR CARS AND SMALL VANS

- i-BOXX made of impact-resistant plastic with integrated handle
- 2x lashing strap with ratchet, 1 m
- 4x tension strap with buckle, 3 m
- 2x lashing strap with ratchet, 2 m
- 4x anti-slip pads, 150 x150 mm
- 6x fitting
- Outside dimensions W x D x H: 367 x 316 x 72 mm

Item no.	Description	Weight (kg)
109410		2.64



## EQUIPMENT HOLDER FOR VANS

- i-BOXX made of impact-resistant plastic with integrated handle
- 2x lashing strap with ratchet, 2 m
- 2x lashing strap with ratchet, 5 m
- 4x anti-slip pads, 150 x150 mm
- 6x fitting
- Outside dimensions W x D x H: 367 x 316 x 72 mm

Item no.	Description	Weight (kg)
109411		2.64







## ***Further accessories***

Organise your commercial vehicle and make it a mobile workshop with ALUCA. Our product range includes functional accessories such as workbenches, vices, tool holders and much more. An excellent addition is the power supply suitable for electric tools, local lighting and laptops.

- ✓ You can respond flexibly to the requests of your customers.
- ✓ You are independent of your stationary workshop or offices.
- ✓ You are mobile and perfectly organised.
- ✓ You can work efficiently.
- ✓ You give your customers a professional impression.



## ROOF RACK

---

- ALUCA offers two different roof box systems
- Top-quality, anodised aluminium frame
- Very corrosion-resistant and durable
- Available for many vehicle types
- Suitable for vehicles with and without C-rails
- Low weight – 25 % lighter than comparable steel products
- Aerodynamic profile reduces wind noise and air resistance
- Full-width rear roller system
- Quick and easy to assemble
- No holes need to be drilled in the vehicle to install this product



## ROOF BAR

---

- ALUCA offers two different roof bar systems and both have an aerodynamic profile to reduce wind noise
- Very sturdy construction
- Quick and easy to assemble
- Lockable on request

### Available accessories

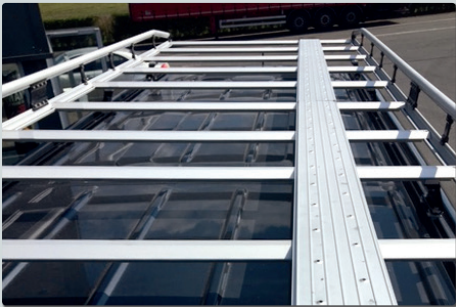
- Side supports for safe transport
- Pipe holder for roof rack
- Ladder clamp for roof rack





## PIPE HOLDER FOR ROOF RACK

- ALUCA offers two different pipe holder systems
- Aluminium construction provides stability and low weight
- Firmly mounted system
- Suitable for many types of crossbars
- Max. weight capacity 50 kg
- End cap with catch provides maximum security and strength
- Approx. 15 minutes to install
- No holes are needed for installation
- Lockable
- Available in lengths of 2 to 6 metres



## PLATFORM UNIT FOR ROOF RACK

- The platform offers additional loading space for the entire length of the roof box and roof bar
- Available for any length





## LADDER LIFT

- ALUCA offers two different ladder lift systems
- Both systems are operated from the ground
- Heavy ladders can be easily fitted on the vehicle roof
- The ergonomic design of the system reduces the strain on the back and the shoulders
- Safe loading and unloading in seconds
- Secure and lockable (padlock not supplied with the product)
- Available for many commercial vehicles



## LADDER CLAMP FOR ROOF RACK

- Made of strong composite materials
- Excellent corrosion protection
- Easy to assemble
- Suitable for up to 4 ladders
- Lockable
- Supplied in twos

Item no.	Description	Weight (kg)
106297	1 pair per pack	2.80



## TAILGATE LADDER

- Mounted on the right-hand rear door of the vehicle
- Provides quick and safe access to the roof to secure cargo to the roof box or roof bar
- Wide rungs for a safe standing position on both feet
- No drilling required
- Available for most commercial vehicles
- 100 % stainless materials



## STEPS WITH RAM PROTECTION

- Made of aluminium with a weight saving of up to 65%
- Easy access to load space
- Ram protection for rear of vehicle
- Minor bumps are easily absorbed
- In a serious impact, the ram protection prevents damage to the vehicle
- No tipping from oblique impact angles
- Completely maintenance and wear-free
- Anti-slip step surface complies with UVV regulations
- High stability thanks to tubular construction
- Very protective thanks to maximum suspension travel





## RUBBERISED LASHING

- Strong rubber band, 30 mm wide
- for quick fixing of light goods

Item no.	Description	Weight (kg)
100998	Sold by the metre	0.14



## RUBBER STRIP LASHING HOOK

- Hanging hook for side sections, perforated walls or supporting frames
- Hanging hook can be pushed into the perforated grid

Item no.	Description	Weight (kg)
101000	Mounting hook	0.01
101001	Rubber strip with 2 hooks 1000 x 30 mm	0.16
101002	Rubber strip with 2 hooks 2000 x 30 mm	0.32



## RUBBER STRIP HANGING KNOB

- Hanging knob for side sections, perforated walls or supporting frames
- Knob is screwed firmly into place
- Rubberised lashings are not approved devices for securing loads

Item no.	Description	Weight (kg)
100999	Hanging knob	0.02
100985	Rubber strip with 2 knobs 1000 x 30 mm	0.20
100986	Rubber strip with 2 knobs 1255 x 30 mm	0.21
100987	Rubber strip with 2 knobs 1500 x 30 mm	0.24
100988	Rubber strip with 2 knobs 2000 x 30 mm	0.31





101048



101049



101050



101051

## EQUIPMENT HOLDER

- For fastening tools with handles, such as brooms and shovels
- Equipment holders can be positioned on the rails at the side and can be extended at any time

Item no.	Description	Weight (kg)
101048	Ø 20 - 30 mm	0.04
101049	Ø 30 - 40 mm	0.05
101050	Rail, aluminium, L: 500 mm	0.20
101051	Rail, aluminium, L: 900 mm	0.35



101052



101053

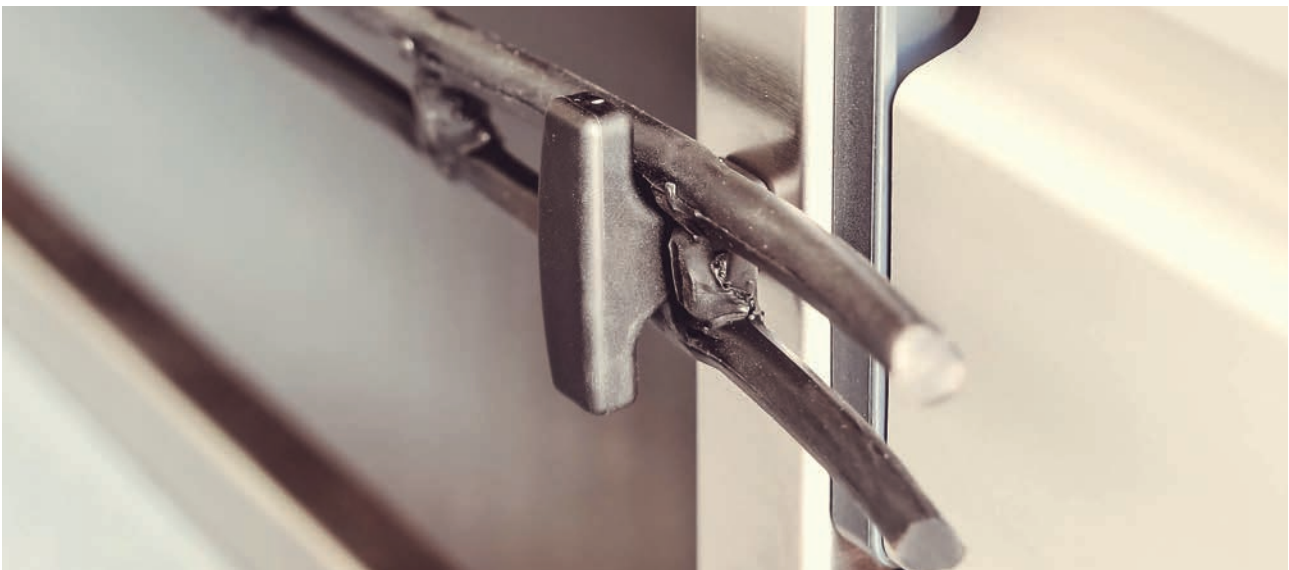


101054

## WALL HOOKS

- Made of aluminium
- Sturdy design
- For cables, ladders, etc.

Item no.	H x D (mm)	Max. load capacity	Weight (kg)
101052	120 x 80	30 kg	0.06
101053	140 x 120	30 kg	0.07
101054	215 x 175	50 kg	0.13





## TOOL HOLDERS

- Pressure-resistant plastic base plate with locking clip
- for mounting on perforated panels and side walls
- Also available in sets

Item no.	Fig.	Description	No. in pack	Dimensions (mm)
101026	1	Single hook	5	L: 38
101027	1	Single hook	5	L: 75
101028	2	Slanting hook	5	L: 35
101029	3	Ramshorn hook, short	5	L: 38; D: 9
101030	3	Ramshorn hook, short	5	L: 38; D: 16
101031	3	Ramshorn hook, short	5	L: 38; D: 23
101032	4	Ramshorn hook, long	5	L: 75; D: 9
101033	4	Ramshorn hook, long	5	L: 75; D: 16
101034	4	Ramshorn hook, long	5	L: 75; D: 23
101035	5	Tool holder	5	Ø: 35
101036	5	Tool holder	5	Ø: 55
101037	6	Clamping holder	5	Ø: 14
101038	6	Clamping holder	5	Ø: 19
101039	6	Clamping holder	5	Ø: 25
101040	7	Ring holder	5	Ø: 40
101041	7	Ring holder	5	Ø: 60
101042	7	Ring holder	5	Ø: 80
101043	8	Round hook	5	Ø: 40
101044	8	Round hook	5	Ø: 60
101047	9	Tool holder	1	Ø: 60
101045	10	Universal holder	1	L: 150
101046	10	Universal holder	1	L: 300



## WORKSHOP CLAMP SET

- 15x clamping holder, Ø 14 mm
- 15x clamping holder, Ø 19 mm
- 20x clamping holder, Ø 25 mm

Item no.	Description	Weight (kg)
109938	50 parts	1,0



## WORKSHOP HOOK SET

- 25x single hook, 38 mm
- 15x single hook, 75 mm
- 25x slanting hook, 35 mm
- 10x double hook, long, 16 mm
- 10x double hook, long, 23 mm
- 5x ring holder, Ø 60 mm
- 5x round hook, Ø 40 mm
- 5x round hook, Ø 60 mm

Item no.	Description	Weight (kg)
109939	100 parts	2,7



## VAN TOOL HOLDER STARTER SET

- 3x clamping holder, Ø 14 mm
- 3x clamping holder, Ø 19 mm
- 4x clamping holder, Ø 25 mm
- 2x ring holder, Ø 40 mm
- 2x ring holder, Ø 60 mm
- 1x ring holder, Ø 80 mm

Item no.	Description	Weight (kg)
109940	15 parts	0,5



## VAN TOOL HOLDER PRO SET

- 15x clamping holder, Ø 14 mm
- 10x clamping holder, Ø 19 mm
- 15x clamping holder, Ø 25 mm
- 5x ring holder, Ø 40 mm
- 3x ring holder, Ø 60 mm
- 2x ring holder, Ø 80 mm

Item no.	Description	Weight (kg)
109940	50 parts	1,3







107617

## UNIVERSAL HOLDER

- Made of aluminium
- for containers up to max. 67 mm diameter
- Available for 3, 4 or 5 containers
- for fast access to cleaners, grease, oil, etc.

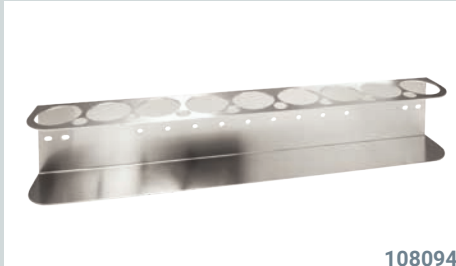


100898



100899

Item no.	For depth	Weight (kg)
100898	320	0.34
100899	420	0.44
107617	520	0.54



108094

## CARTRIDGE HOLDER

- Made of aluminium
- Can be used for standard cartridges with integrated nozzle holder
- Available for 5, 7 or 9 cartridges
- Suitable for mounting on supporting frames and side walls



108090



108092

Item no.	For depth	Weight (kg)
108090	Depth 320 mm	0.35
108092	Depth 420 mm	0.45
108094	Depth 520 mm	0.55



## UNIVERSAL DEVICE HOLDER

- Made of aluminium
- ideal for storing long-stemmed tools e.g. shovel, broom etc.
- can be used universally, even on rear doors of a transporter
- with optional additional cross beam, if tools of different heights are to be transported safely

Item no.	For depth	Weight (kg)
108582	Depth 320 mm	0,75
108583	Depth 420 mm	0,85
108584	Depth 520 mm	0,95



## PAPER-TOWEL DISPENSER

- Includes folding towels
- Easy removal of paper towels
- Viewing slot on front for checking fill level

Item no.	W x D x H (mm)	Weight (kg)
108315	276 x 130 x 365	0.20 empty



## SOAP DISPENSER

- Housing made of impact-proof plastic, white
- With viewing window
- Supplied with 1 l liquid soap

Item no.	Description	Weight (kg)
100937	W x D x H: 140 x 110 x 270 mm	1.71
100940	Spare bottles, sold in packs of 6	6 x 0.98



## PAPER ROLL HOLDER

- for installation of side of system
- Very sturdy construction
- Rapid removal of paper towels
- Paper roll not included
- available in two sizes

Item no.	Description	Weight (kg)
108241	W x D: 220 x 200 mm	0.56
108324	Paper roll white 138 mm	0.98
107778	L x D: 390 x 300 mm	3.45
108038	Paper roll blue 500 sheets 3-ply	3.9





## CARE SPRAY

- Cleans, maintains and protects aluminium surfaces
- Removes fingerprints, lubrication film and dirt
- Leaves behind a long-lasting protective film

Item no.	Description	Weight (kg)
100896	400 ml	0.44
100897	12 units per pack	12x 0.44



## PROTECTIVE OIL

- Mineral oil-based lubricant
- For regular care and maintenance of drawer runners

Item no.	Description	Weight (kg)
100907	100 ml	0.12
100908	12 units per pack	12x 0.12



107743

## WATER CAN

- Made of plastic
- 15 L capacity
- With tap and filler nozzle

W x H x D: 334 x 300 x 179 mm



100947



100946

Item no.	Description	Weight (kg)
107743	Water can with holder and 1 m hose	2.95
100947	Water can with 1 m hose	1.60
100946	Holder for water can	0.88



## VENTILATION



Enclosed vehicles that carry pressurised gas cylinders are legally obliged to integrate two non-closable openings in the load compartment (see GGVS and memorandum DVS 0211).

The vents must be aligned diagonally. You will need an air passage of 100 cm<sup>2</sup> in each case. It is recommended to make an opening at the front of the roof and a second in the tail gate.



### SIDE WALL VENT

- Made of aluminium
- for mounting on the side wall
- Delivery includes seal
- Suitable for car washes

Item no.	W x H (mm)	Weight (kg)
101022	140 x 140	0.10
101023	200 x 200	0.17



## SIDE WALL VENT

- Made of ABS plastic
- for mounting on the side wall
- Delivery includes seal
- Suitable for car washes

Item no.	Description	Weight (kg)
101024	1 set per pack	0.68



## ROOF VENT

- Made of plastic
- Mounting hole 50 mm diameter
- Includes adapter for vehicle roof liner
- Very small design
- Ideal for vehicle roofs with narrow roof ribs and rails
- Short installation time because it can be done using a punch-cutter
- Minimal chips during installation
- With DEKRA test certificate, approved by ADR/GGVSEB/RSEB

Item no.	Diameter (mm)	Weight (kg)
107634	50	0.11



## FLOOR VENT GRATE

- Made of stainless steel
- In accordance with ADR/GGVSEB/RSEB

Item no.	Diameter (mm)	Weight (kg)
101020	135	0.90





## LED WORK LIGHTS

- 12 - 24 V DC / 18 W
- With handle and magnetic foot
- Spiral cable with 12 V plug for connection to 12 V socket or cigarette lighter

Item no.	Description	Weight (kg)
109278	W x H: 104 x 118 mm	1.30



## LED WORK LIGHTS

- 12 - 24 VDC / 18 W
- for permanent mounting on the vehicle
- available with or without on/off switch

Item no.	Description	Weight (kg)
110708	B x H: 104 x 118 mm	0,72
110709	B x H: 104 x 118 mm	0,72



## PORTABLE LED LIGHT - EXPLOSION-PROOF

- Working and emergency light with emergency power function
- Protection class IP 64
- Light heads turns through 110°
- 12/24 V DC
- Emergency light in accordance with VDE 0108
- 4-stage charging indicator
- Maintenance-free lead/gel battery
- Light range up to 170 m
- Main lamp 3 W power LED, 180 lm, lamp life approx. 5 h
- 5 mm LED pilot light, bulb duration approx. 75 h
- Includes charger/holder, 230 V AC 50/60 Hz

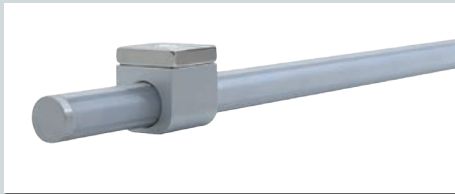
Item no.	W x H x D (mm)	Weight (kg)
108114	104 x 245 x 120	1.10



## PORTABLE LED LIGHT

- Protection class IP 54, 170 lm
- Light heads turns through 110°
- 12/24 V DC
- Maintenance-free lead/gel battery
- Light range up to 150 m
- Lamp life approx. 5 h, pilot lamp life approx. 75 h
- Includes charger/holder, 230 V AC 50/60 Hz

Item no.	W x H x D (mm)	Weight (kg)
106207	104 x 245 x 120	1.10



## LED STRIP LIGHT WITH 2 MAGNETIC HOLDERS

- 78 LEDs, 1900 lm, 5500 K (daylight)
- 12 V DC / 18 W
- Energy efficiency class A++
- Connecting cable 1 m long with 4.8 mm flat blade connector
- Non-destructive installation thanks to magnetic holder
- Holds up to 17 kg

Item no.	L; Ø (mm)	Weight (kg)
108011	1000; 12	0.95



## LED CEILING LIGHTS

- LED light 12-24 V DC / 9 W
- With switch
- Warm white

Art.-Nr.	B x H x T (mm)	Gewicht (kg)
108846	500 x 13 x 30	0,20



- IP 67, switch IP 40
- 12 V DC / 4 W
- 30 LEDs; 3000 K; 600 lm

Art.-Nr.	L x B (mm)	Gewicht (kg)
108319	350 x 45	0,23



## LED BEACON LIGHTS

- Light dome made of polycarbonate, orange
- LED with 12 x 3 W
- **With adapter socket, type A**
- 120 flashes per minute
- Certified as conforming to ECE R65, IP 67

Item no.	H; Ø (mm)	Weight (kg)
109412	172; 149	1,0



## LED BEACON LIGHTS

- Light dome made of polycarbonate, orange
- LED with 12 x 3 W
- **With flexible adapter socket**
- 120 flashes per minute
- Certified as conforming to ECE R65, IP 67

Item no.	H; Ø (mm)	Weight (kg)
109413	221; 149	1,0



## LED BEACON LIGHTS

- Light dome made of polycarbonate, orange
- LED with 12 x 3 W
- **3-point attachment**
- 120 flashes per minute
- Certified as conforming to ECE R65, IP 67

Item no.	H; Ø (mm)	Weight (kg)
108012	115; 154	1.30





## LED BEACON LIGHTS

- Light dome made of polycarbonate, orange
- LED with 12 x 3 W
- **With spiral cable and socket for cigarette lighter**
- With magnetic holder for intermittent use
- Can become detached from top of vehicle in winds > 112 km/h
- 120 flashes per minute
- Certified as conforming to ECE R65, IP 67

Item no.	H; Ø (mm)	Weight (kg)
108013	126; 183	1.30

## ACCESSORIES FOR BEACON LIGHTS



109420



109421



109415



109414



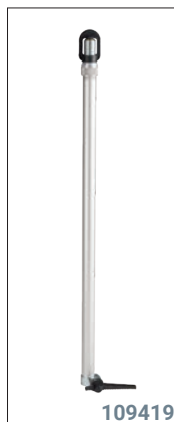
109418



109416

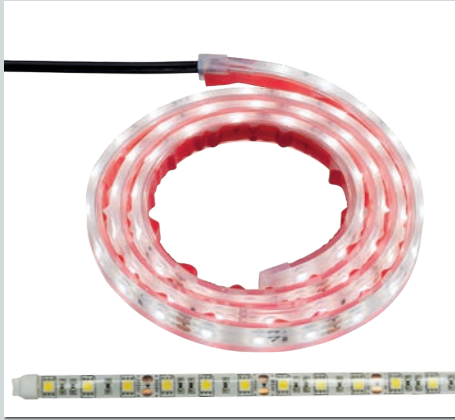


109417



109419

Item no.	Description	Weight (kg)
109421	Underlay for beacon	0,10
109420	Underlay for beacon	0,10
109415	Adapter	0,19
109414	Extension	0,19
109418	Extension	0,50
109416	Angle bracket	0,30
109417	Bracket	0,26
109419	Telescopic extension	1,00



## LED STRIP

- 60 LEDs
- Neutral white 4500 K
- 14.4 W / m
- Self-sticking
- Can be individually cut to size
- Connecting cable length 2 m

Item no.	L (mm)	Weight (kg)
108010	1000	0.15



## DIGITAL SINE WAVE INVERTER

- Safe operation for sensitive loads with a real sine wave output voltage
- The microprocessor-controlled electronics monitor the key parameters such as stable output voltage, frequency and input voltage
- Output voltage 230 V/50 Hz
- Electrically isolated
- Controlled by digital signal processor
- Stand-by function
- Adjustable low-discharge protection
- Short-circuit proof
- Optional remote control in 3 versions
- E-certification
- From 300 W to 2000 W power output



Item no.	Description	Weight (kg)
108482	300 W Input current: max. 31 A L x W x H: 263 x 164 x 88 mm	1.80
108457	600 W Input current: max. 62 A L x W x H: 277 x 234 x 88 mm	2.90
108483	1200 W Input current: max. 124 A L x W x H: 391 x 234 x 88 mm	3.50
108459	2000 W Input current: max. 248 A L x W x H: 391 x 334 x 88 mm	4.80

## ACCESSORIES FOR DIGITAL SINE WAVE INVERTER



### 12 V/15 A BATTERY CHARGER

- 5-stage charge profile with temperature compensation
- 4 charging programmes
- Mains mode
- Recovery for flat batteries
- IP65
- for 12 V batteries

Item no.	L x W x H (mm)	Weight (kg)
108491	?	3.15



### REMOTE CONTROL

- Convenient on/off switch for all voltage converters in the digital sinus wave inverter series
- 4 m cable length
- With LED tell-tales

Item no.	L x W x H (mm)	Weight (kg)
108490	50 x 38 x 28	0.06



### CONNECTING CABLE

- Connecting cable with fuse and fuse holder

Item no.	Description	Weight (kg)
108458	For inverter: length: 1 m 16 mm <sup>2</sup> , 200 A fuse	0.30
108484	For inverter: length: 2 m 16 mm <sup>2</sup> , 200 A fuse	0.40
108485	For inverter: length: 1 m 25 mm <sup>2</sup> , 200 A fuse	0.30
108486	For inverter: length: 2 m 25 mm <sup>2</sup> , 200 A fuse	0.40
108487	For inverter: length: 1 m 35 mm <sup>2</sup> , 200 A fuse	0.40
108488	For inverter: length: 2 m 35 mm <sup>2</sup> , 200 A fuse	0.50
108489	For inverter: length: 3 m 50 mm <sup>2</sup> , 200 A fuse	0.60

## ACCESSORIES FOR POWER SUPPLY IN 12-24 V DC RANGE



100949



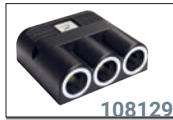
105228



100950



100958



108129

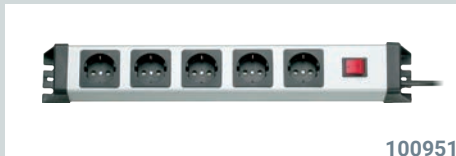


108130

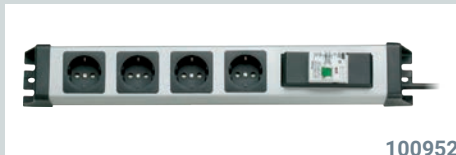
### 12 V SOCKET

- Allows for more connection options in the vehicle
- Provides power supply for flashing lights, cool boxes and electronic equipment

Item no.	Description	Weight (kg)
100949	Top-mounted socket for small plugs	0.02
105228	Top-mounted socket for large plugs	0.04
100950	Normal recessed socket with cover flap	0.02
100958	2-pin plug	0.02
108129	Triple top-mounted socket for large plugs	0.10
108130	ON/OFF switch	0.05



100951



100952

### 250 V POWER STRIP

- 5 outlets with illuminated on/off switch or 4 outlets with RCBO

Item no.	Description	Weight (kg)
100951	With ON/OFF switch	0.90
100952	RCBO	0.90



### REFRIGERATOR

- Gross content: 64 L incl. 7.2 L freezer compartment
- Supply voltage: 12 / 24 V DC
- Average power consumption approx. 45 W
- Normal refrigeration and separately insulated freezer compartment (to -18°C)
- Hermetically sealed compressor with integrated electronic controls
- Undervoltage protection
- Automatic reverse polarity protection
- Infinitely adjustable thermostat
- Condensation drain via hose connection or tray
- Mechanical door lock

Item no.	Description	Weight (kg)
108468	With fixings and fastenings	20.64





## COOL DRAWER

- Approx. 30 L gross content
- Supply voltage: 12 / 24 V DC
- Average power consumption approx. 40 W
- Temperature range: +12°C to -2°C
- Easy pull-out drawer with ball bearing runners
- Cooled contents readily accessible
- Infinitely adjustable thermostat
- Handle for moving in and out
- Secure lock

Item no.	W x D x H (mm)	Weight (kg)
103414	440 x 730 x 250	18.00





## FIRE EXTINGUISHER, 2 KG

- Portable extinguisher (stored pressure version)
- with 2 kg ABC dry powder
- Comfortable one-hand use
- incl. vehicle bracket
- Ratings: 13 A / 89 B / C
- EN 3 certification

Item no.	W x H x D; Ø	Weight (kg)
100912	110 x 350 x 125; 110	3.70



## FIRE EXTINGUISHER, 6 KG

- Portable extinguisher (rechargeable)
- with 6 kg ABC dry powder
- Internal compressed gas cylinder
- Triggered by impact/recharge fitting
- Ratings: 34 A / 183 B / C
- EN 3 certification

Item no.	W x H; Ø	Weight (kg)
104456	210 x 550; 150	10.50



## BRACKET FOR 6 KG FIRE EXTINGUISHER

- for safe storage of the extinguisher in the vehicle
- Has the advantage that the extinguisher can be removed with a quick-release and secure handle

Item no.	Weight (kg)
104457	1.40



## FOLDING CONE WITH FLASHING LIGHT

- Folds up, minimal space requirement
- Certified in accordance with DIN FNFV as standard equipment for emergency vehicles to secure dangerous traffic locations
- High stability and low centre of gravity using hard rubber base plate
- Can be switched from flashing to continuous
- Includes battery and protective packet
- Available in 2 sizes

Item no.	Height when erected (mm)	Weight (kg)
104970	500	1.80
104971	750	3.20



## HIGH-VIS VEST

- Orange
- Two all-round reflective stripes for visibility from all sides (360° visibility)
- Complies with EN ISO 20471:2013

Item no.	Weight (kg)
108252	0.10



## EMERGENCY HAMMER WITH BELT KNIFE

- Made of heavy-duty plastic
- With fastening plate and reflective sticker

Item no.	L x W (mm)	Weight (kg)
108171	183 x 86	0.19



## WARNING MARKING - SELF-STICKING

- Available by the metre, pointing left and right
- Complies with DIN 30710
- Safety for personnel and materials
- Points left and right
- Height: 141 mm

Item no.	Description	Weight (kg)
104472	Pointing left	0.01
104473	Pointing right	0.01

## GENERAL INFORMATION

- Our general terms and conditions, available at [www.aluca.de](http://www.aluca.de), apply.
  - Subject to technical changes.
  - We cannot be held responsible for misprints or errors.
  - Weight details are rounded to the nearest whole unit.
- Decorative items shown on illustrations do not form part of the scope of delivery.
  - Reproduction - even in part - is permissible only with the approval of the publisher.





**ALUCA®**

Lightweight mobile storage systems

**ALUCA GmbH**

Westring 1  
74538 Rosengarten  
Germany

**T** +49 791 95040-0

**F** +49 791 95040-20

**E** [info@aluca.de](mailto:info@aluca.de)

Vertrieb durch

[www.aluca.de](http://www.aluca.de)